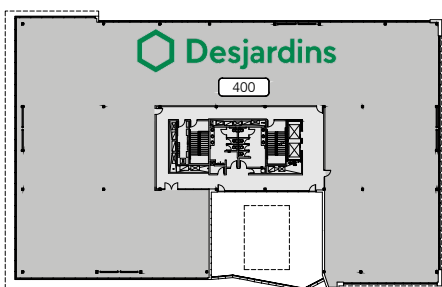
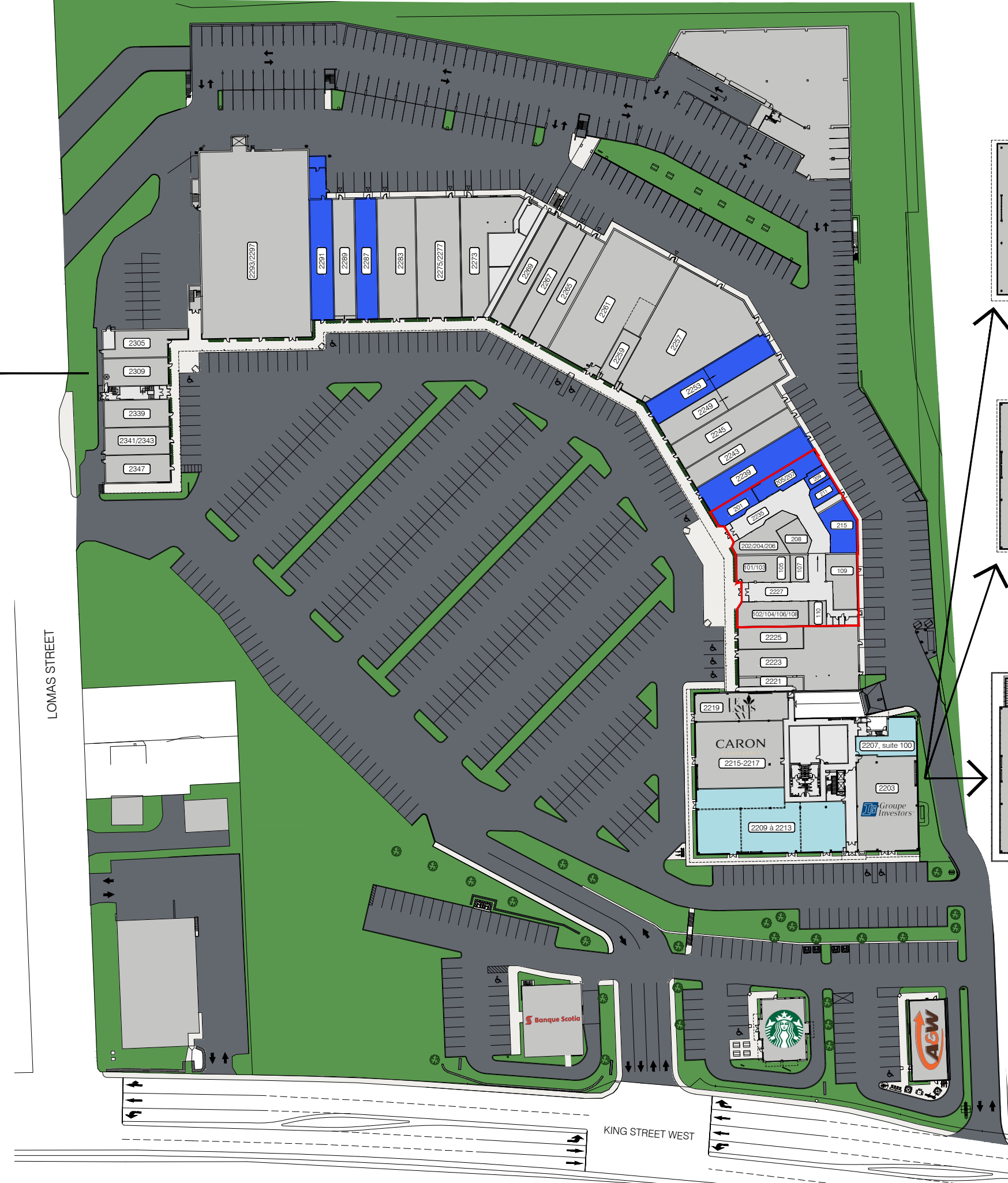
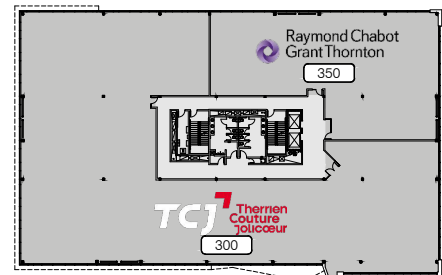


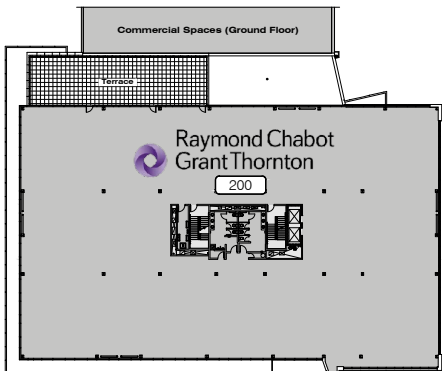
LEVEL 2



LEVEL 4



LEVEL 3



LEVEL 2

LIST OF SPACES - COMMERCIAL PREMISES

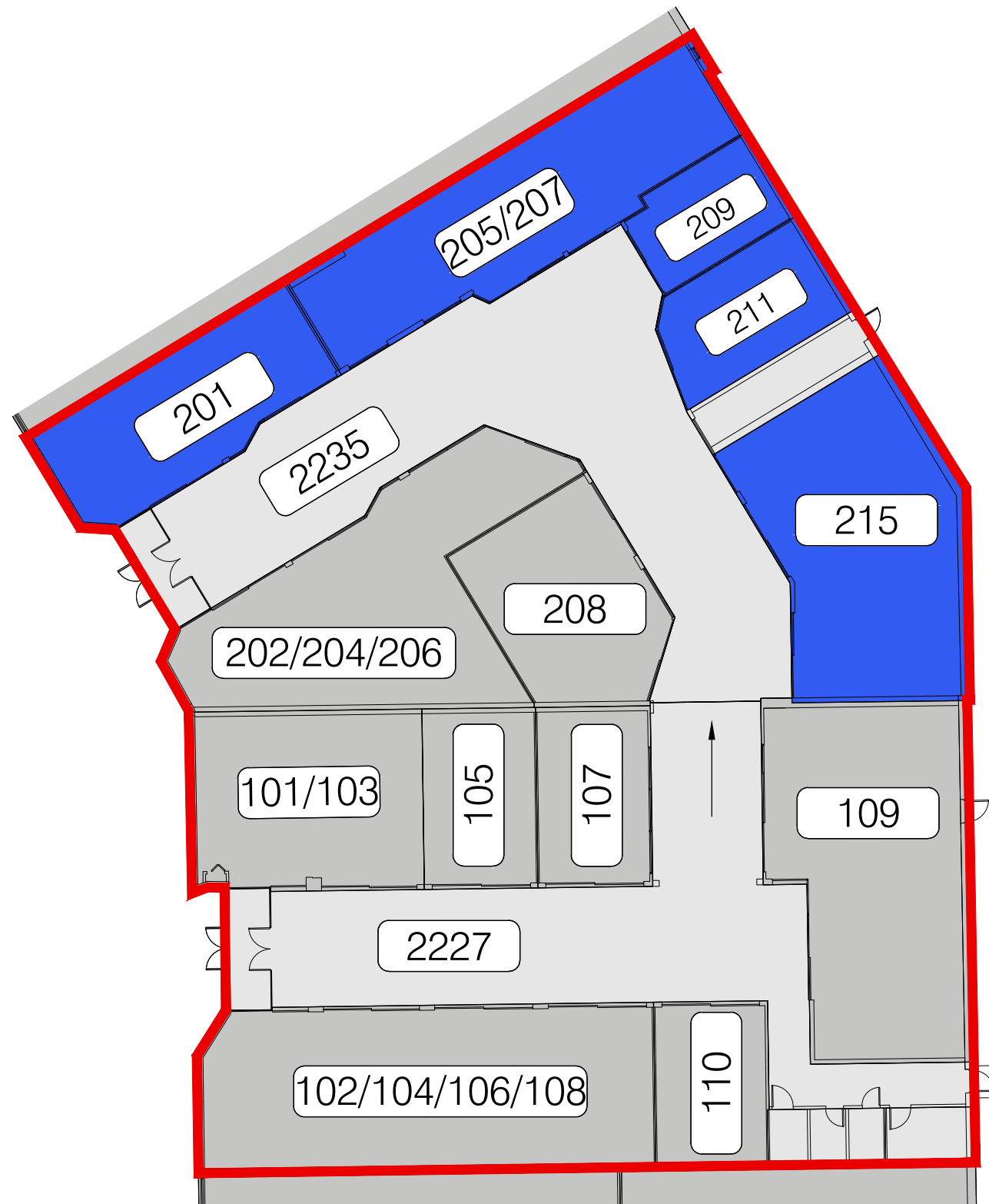
- | | | | |
|-----------|-----------------------------|-----------------|--|
| 2221 | LE LOUIS XVI | 101/103 | LE CENTRE AES - EXPERTS EN VACCINATION |
| 2223 | SHOGUN SUSHI RESTAURANT | 102/104/106/108 | BIKINI ET DENTELLE |
| 2225 | BIJOUTERIE SKINNER & NADEAU | 105 | CENTURY 21 EXPERT |
| 2239 | SPACE FOR LEASE | 107 | MB CARTES |
| 2243 | BOUTIQUE SUBTILE | 109 | CAFÉ DELUXE VIETNAMIEN |
| 2245 | BOUTIQUE ORIENT | 110 | MÉTAMORPHOSE BEAUTÉ |
| 2249 | GOURMANDE BOUTIQUE | 201 | LOCAL À LOUER |
| 2253 | SPACE FOR LEASE | 202/204/206 | L'O DE L'AUBE |
| 2257 | LASER GAME ÉVOLUTION | 205/207 | SPACE FOR LEASE |
| 2259 | LES BARBIERS KING | 208 | CHAMBRE IMMOBILIÈRE DE L'ESTRIE |
| 2261 | PHARMACIE FAMILIPRIX | 209 | SPACE FOR LEASE |
| 2265 | CHOCO-LÀ | 211 | SPACE FOR LEASE |
| 2267 | BOUTIQUE FAN CLUB | 215 | SPACE FOR LEASE |
| 2269 | BOUTIQUE FILLES D'ÈVE | | |
| 2273 | ORANGE THEORY | | |
| 2275/2277 | OPTO PLUS | 2305 | TRICOT-THÉ SERRÉ |
| 2283 | GRENIER | 2309 | BIJOUTERIE FERNAND TURCOTTE |
| 2287 | SPACE FOR LEASE | 2339 | GTR SANTÉ |
| 2289 | BOUTIQUE POUR LUI | 2341/2343 | PEINTURE DÉCO M.B. |
| 2291 | SPACE FOR LEASE | 2347 | PIOSA |
| 2293/2297 | RENAISSANCE FRIPE-PRIX | | |

LIST OF SPACES - OFFICE BUILDING

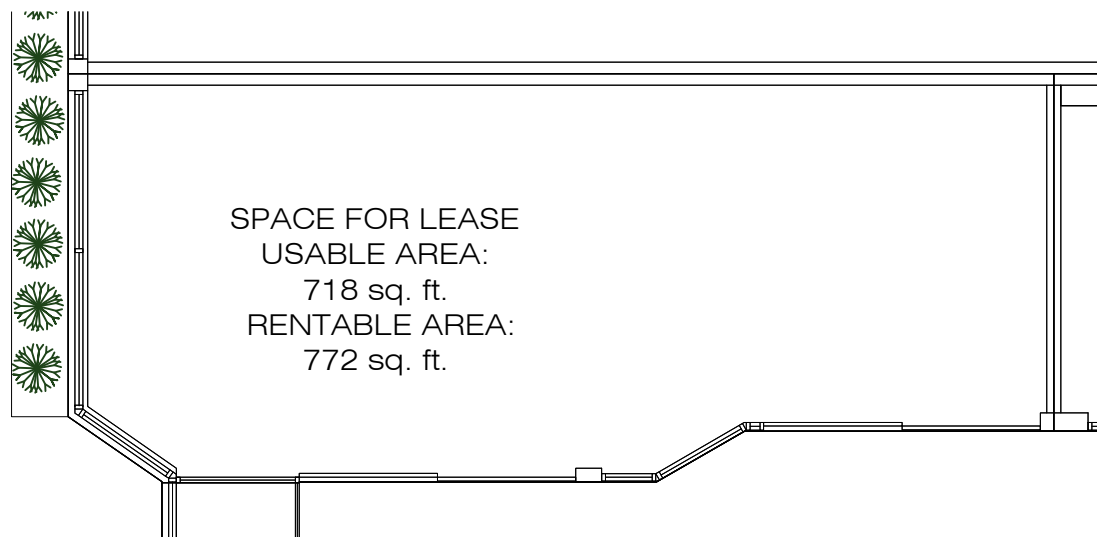
- 2203 INVESTORS
- 2207, space 100 SPACE FOR LEASE
RENTABLE AREA: 1 636 SQ. FT.
- 2209 to 2213 SPACE FOR LEASE (SUBDIVISIBLE)
RENTABLE AREA: 8 313 SQ. FT. MAX.
- 2215-2217 CARON CHAUSSURES
- 2219 LE LOUIS XVI RESTAURANT
- 200 RAYMOND CHABOT GRANT THORNTON
- 300 THERRIEN COUTURE JOLICOEUR
- 350 RAYMOND CHABOT GRANT THORNTON
- 400 DESJARDINS

LEGEND

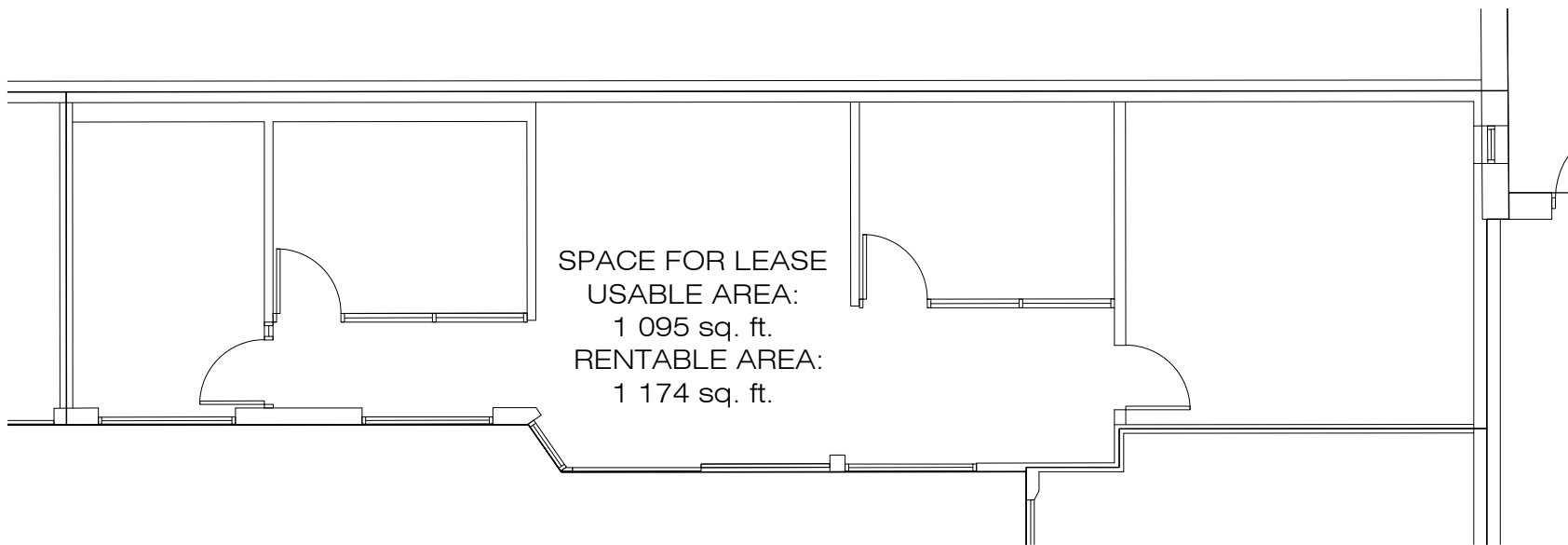
- SPACES FOR LEASE
- RENTED SPACES



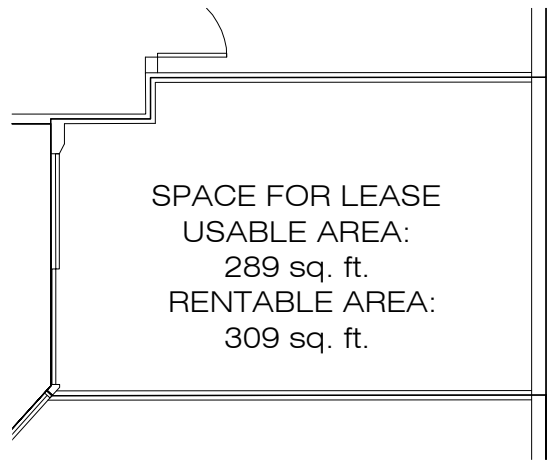
MAIL 2227	101/103	LE CENTRE AES - EXPERTS EN VACCINATION
	102/104/106/108	BIKINI ET DENTELLE
	105	CENTURY 21 EXPERT
	107	MB CARTES
	109	CAFÉ DELUXE VIETNAMEIEN
	110	MÉTAMORPHOSE BEAUTÉ
MAIL 2235	201	LOCAL À LOUER
	202/204/206	L'O DE L'AUBE
	205/207	SPACE FOR LEASE
	208	CHAMBRE IMMOBILIÈRE DE L'ESTRIE
	209	SPACE FOR LEASE
	211	SPACE FOR LEASE
	215	SPACE FOR LEASE



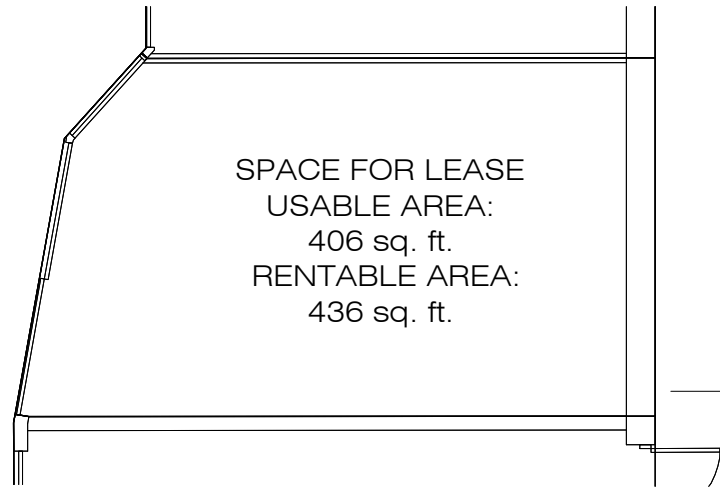
PROMENADES KING - MALL 2235, SPACE 201
SCALE: 1:100



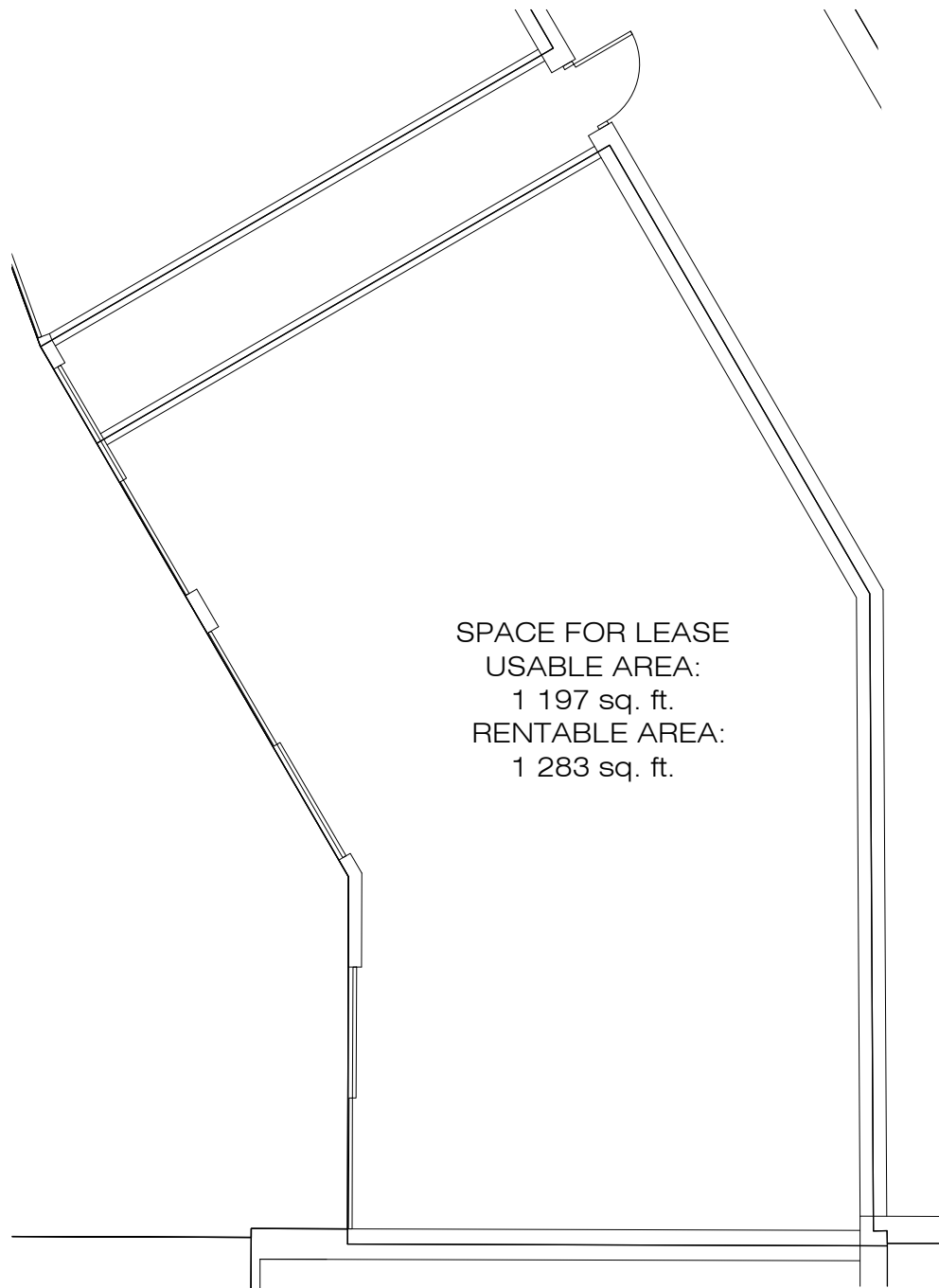
PROMENADES KING - MALL 2235, SPACE 205/207
SCALE: 1:100



PROMENADES KING - MALL 2235, SPACE 209
SCALE: 1:100



PROMENADES KING - MALL 2235, SPACE 211
SCALE: 1:100



SPACE FOR LEASE
USABLE AREA:
1 197 sq. ft.
RENTABLE AREA:
1 283 sq. ft.

PROMENADES KING - MALL 2235, SPACE 215
SCALE: 1:100