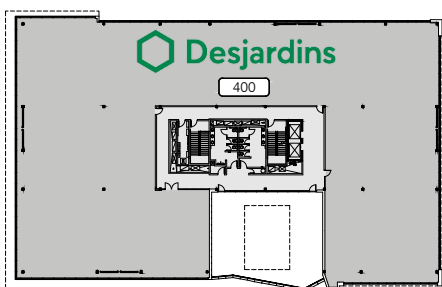
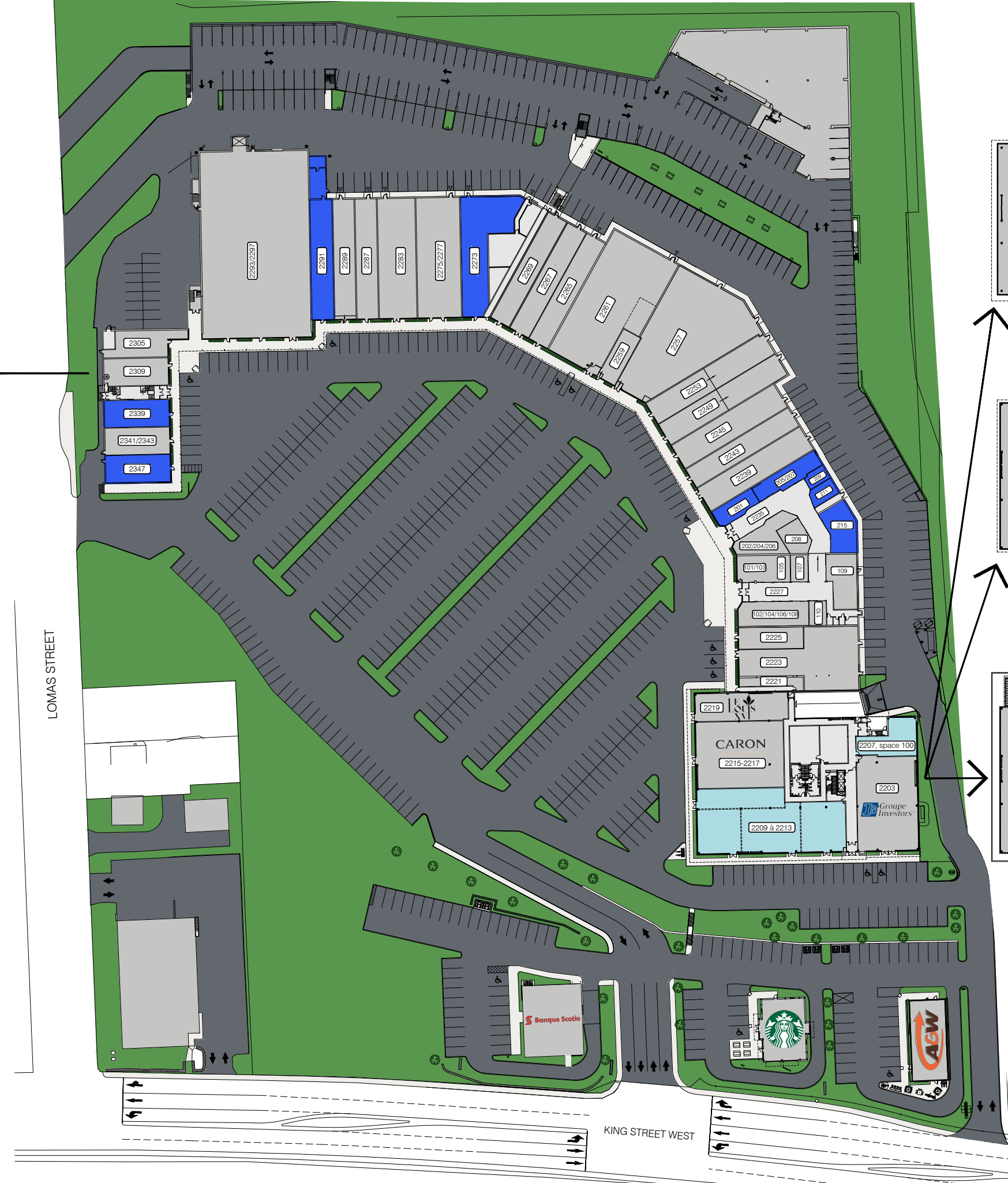
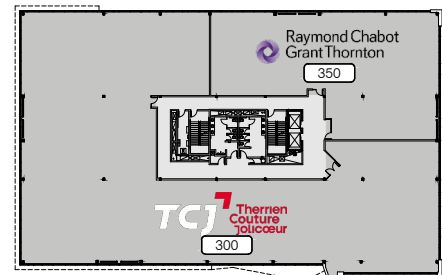




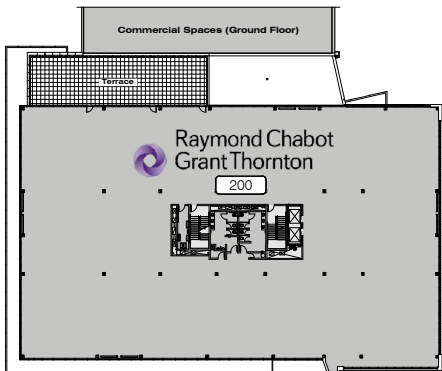
LEVEL 2



LEVEL 4



LEVEL 3



LEVEL 2

**LIST OF SPACES - COMMERCIAL PREMISES**

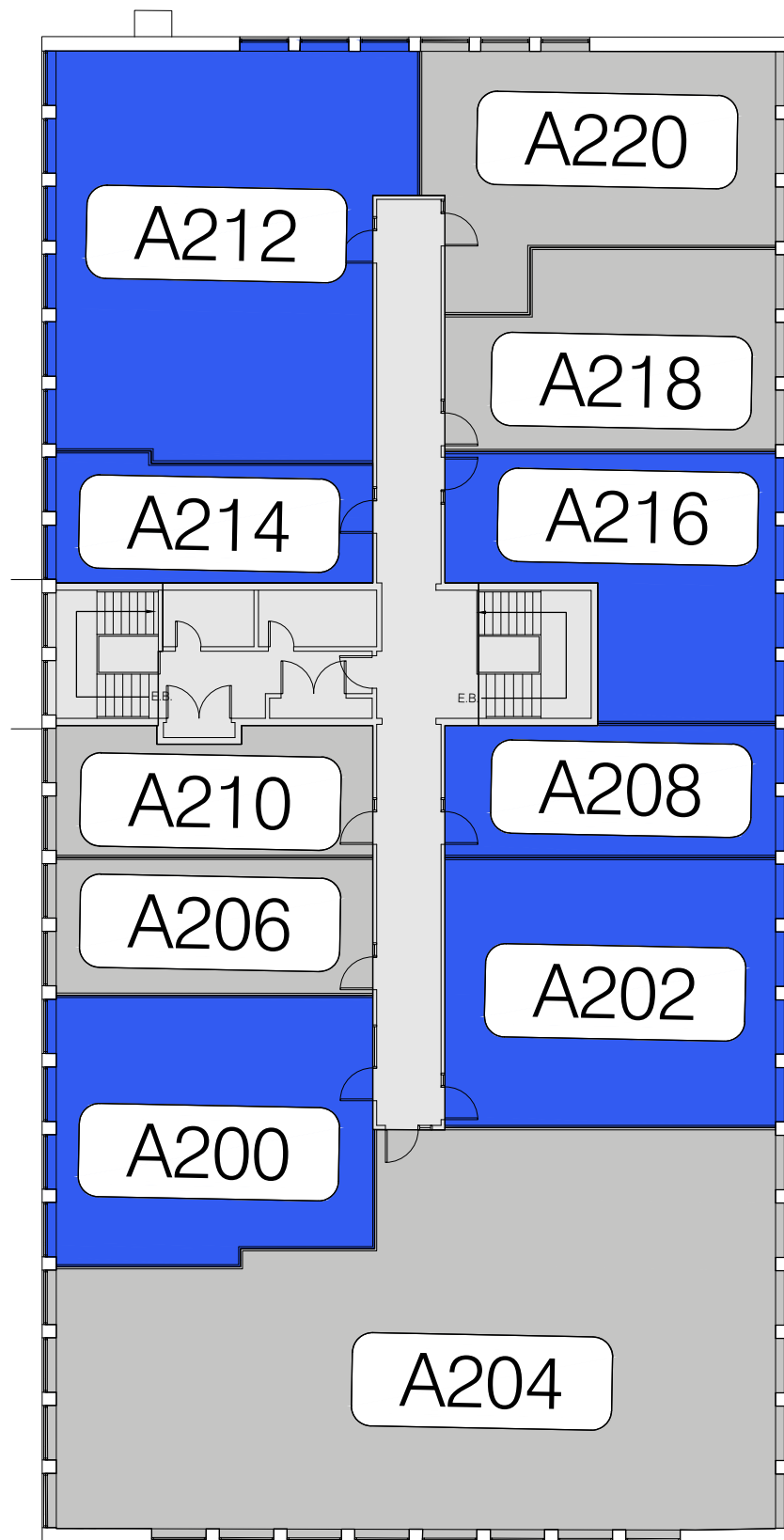
- 2221 LE LOUIS XVI
- 2223 SHOGUN SUSHI RESTAURANT
- 2225 BIJOUTERIE SKINNER & NADEAU
- 2239 TABAGIE KING
- 2243 BOUTIQUE SUBTILE
- 2245 BOUTIQUE ORIENT
- 2249 GOURMANDE BOUTIQUE
- 2253 CHAUSSURES PANDA
- 2257 LASER GAME ÉVOLUTION
- 2259 LES BARBIERS KING
- 2261 PHARMACIE FAMILIPRIX
- 2265 CHOCO-LÀ
- 2267 BOUTIQUE FAN CLUB
- 2269 BOUTIQUE FILLES D'ÈVE
- 2273 SPACE FOR LEASE
- 2275/2277 OPTO PLUS
- 2283 GRENIER
- 2287 MODE JULES VERREAULT
- 2289 BOUTIQUE POUR LUI
- 2291 SPACE FOR LEASE
- 2293/2297 RENAISSANCE FRIPE-PRIX
- 101/103 LE CENTRE AES - EXPERTS EN VACCINATION
- 102/104/106/108 BIKINI ET DENTELLE
- 105 CENTURY 21 EXPERT
- 107 MB CARTES
- 109 CAFÉ DELUXE VIETNAMIEN
- 110 MÉTAMORPHOSE BEAUTÉ
- 201 LOCAL À LOUER
- 202/204/206 L'O DE L'AUBE
- 205/207 SPACE FOR LEASE
- 208 CHAMBRE IMMOBILIÈRE DE L'ESTRIE
- 209 SPACE FOR LEASE
- 211 SPACE FOR LEASE
- 215 SPACE FOR LEASE
- 2305 TRICOT-THÉ SERRÉ
- 2309 BIJOUTERIE FERNAND TURCOTTE
- 2339 SPACE FOR LEASE
- 2341/2343 PEINTURE DÉCO M.B.
- 2347 SPACE FOR LEASE

**LIST OF SPACES - OFFICE BUILDING**

- 2203 INVESTORS
- 2207, space 100 SPACE FOR LEASE  
RENTABLE AREA: 1 636 SQ. FT.
- 2209 to 2213 SPACE FOR LEASE (SUBDIVISIBLE)  
RENTABLE AREA: 8 313 SQ. FT. MAX.
- 2215-2217 CARON CHAUSSURES
- 2219 LE LOUIS XVI RESTAURANT
- 200 RAYMOND CHABOT GRANT THORNTON
- 300 THERRIEN COUTURE JOLICOEUR
- 350 RAYMOND CHABOT GRANT THORNTON
- 400 DESJARDINS

**LEGEND**

- SPACES FOR LEASE
- RENTED SPACES



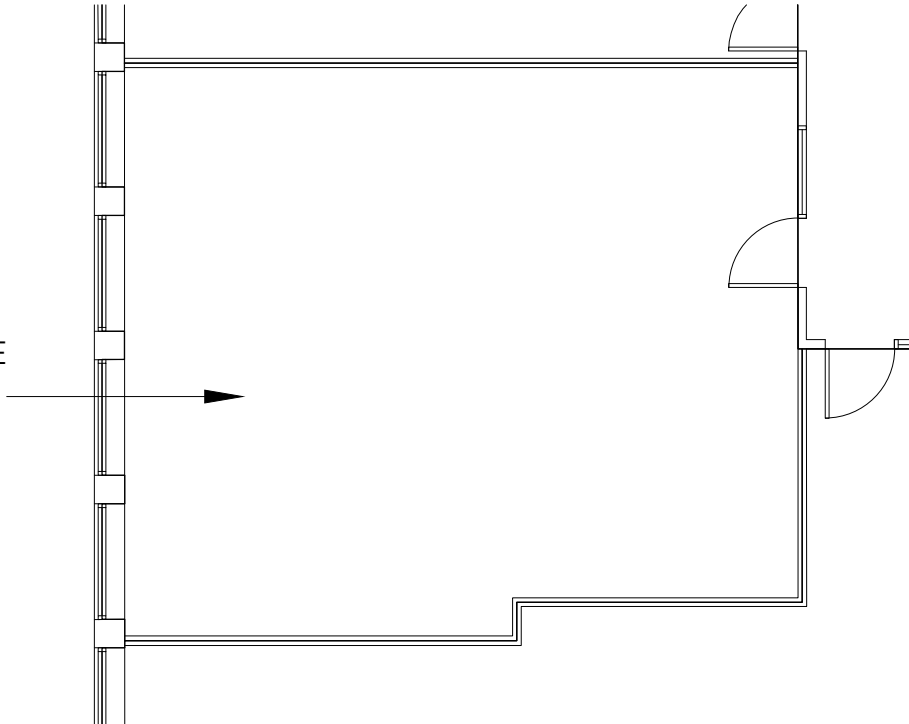
## LIST OF SPACES

- A200 SPACE FOR LEASE
- A202 SPACE FOR LEASE
- A204 DUFRESNE, SAVARY & ASSOCIÉS INC.
- A206 LIAISONS RÉSEAU D'AFFAIRES
- A208 SPACE FOR LEASE
- A210 MON MASSO
- A212 SPACE FOR LEASE
- A214 SPACE FOR LEASE
- A216 SPACE FOR LEASE
- A218 UNIFOR 78
- A220 CLINIQUE MÉDICALE DES PROMENADES KING

## LEGEND

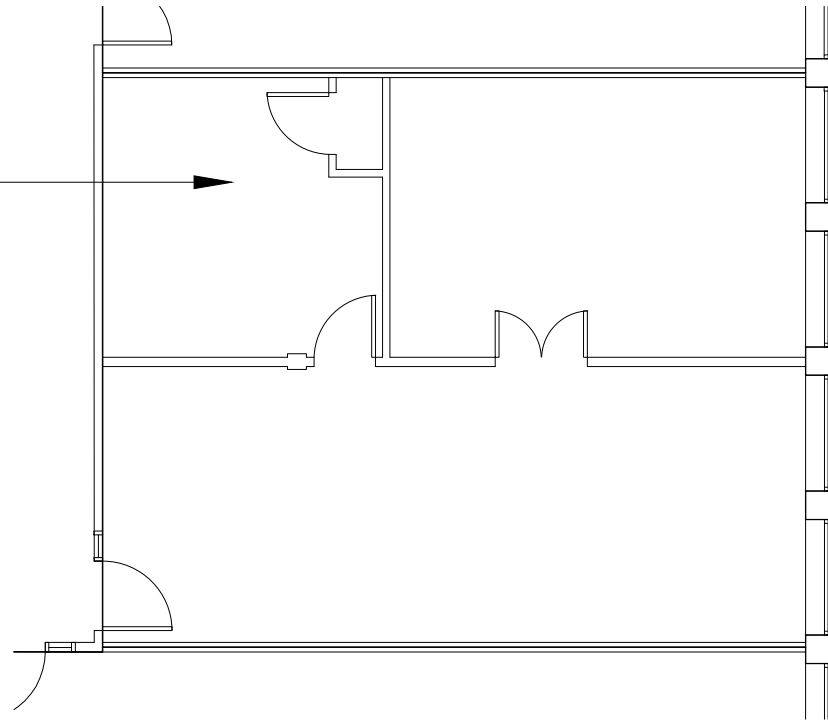
- SPACES FOR LEASE
- EXISTING TENANTS

SPACE FOR LEASE  
USABLE AREA:  
734 sq. ft.  
RENTABLE AREA:  
883 sq. ft.



PROMENADES KING - BUILDING 2313, SPACE A200  
SCALE: 1:100

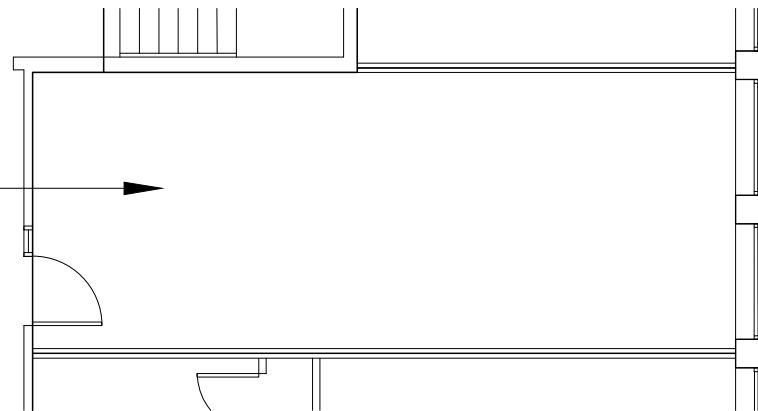
LOCAL À LOUER  
SUPERFICIE UTILISABLE:  
780 pi<sup>2</sup>  
SUPERFICIE LOCATIVE:  
939 pi<sup>2</sup>



PROMENADES KING - BÂTIMENT 2313, LOCAL A202

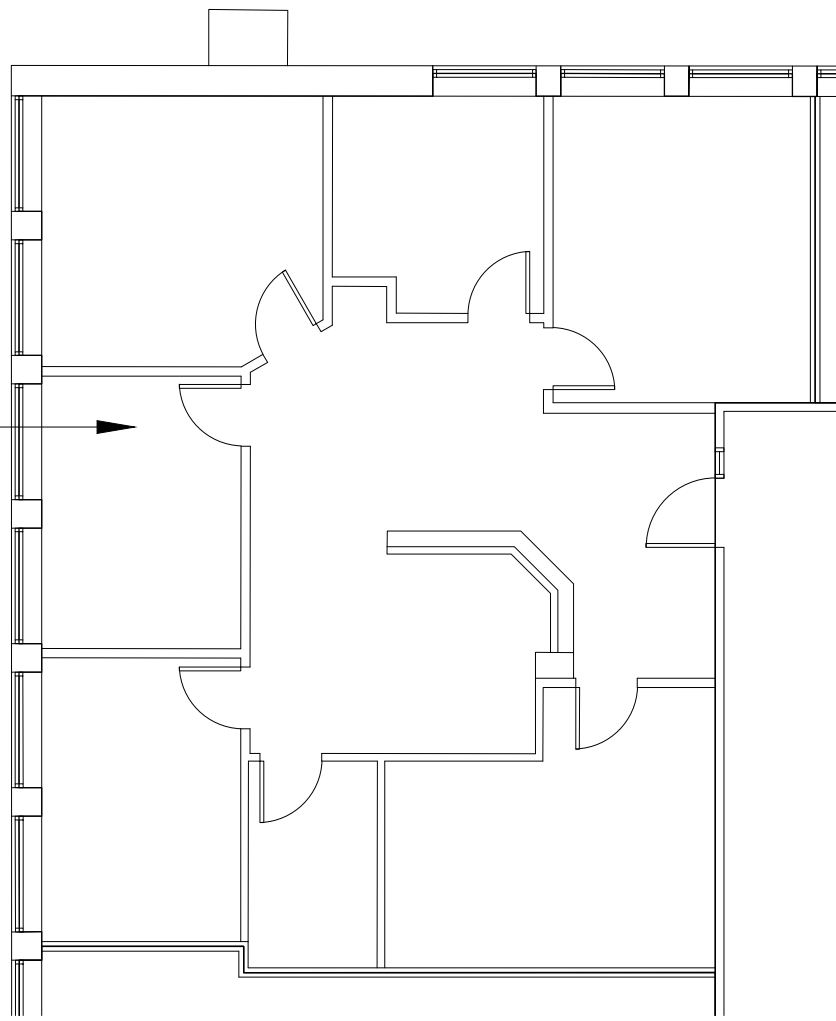
ÉCH: 1:100

LOCAL À LOUER  
SUPERFICIE UTILISABLE: 384 pi<sup>2</sup>  
SUPERFICIE LOCATIVE: 463 pi<sup>2</sup>

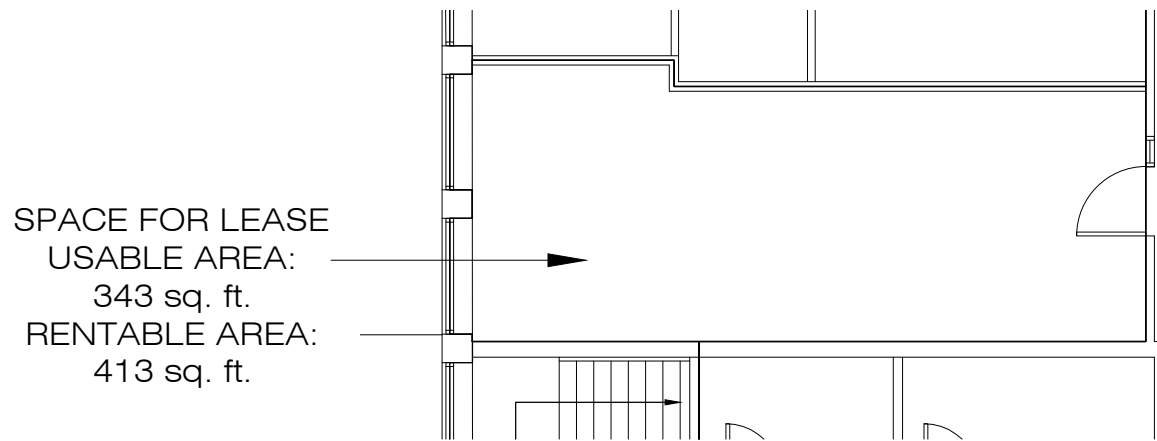


PROMENADES KING - BÂTIMENT 2313, LOCAL A208  
ÉCH: 1:100

SPACE FOR LEASE  
USABLE AREA:  
1 202 sq. ft.  
RENTABLE AREA:  
1 447 sq. ft.

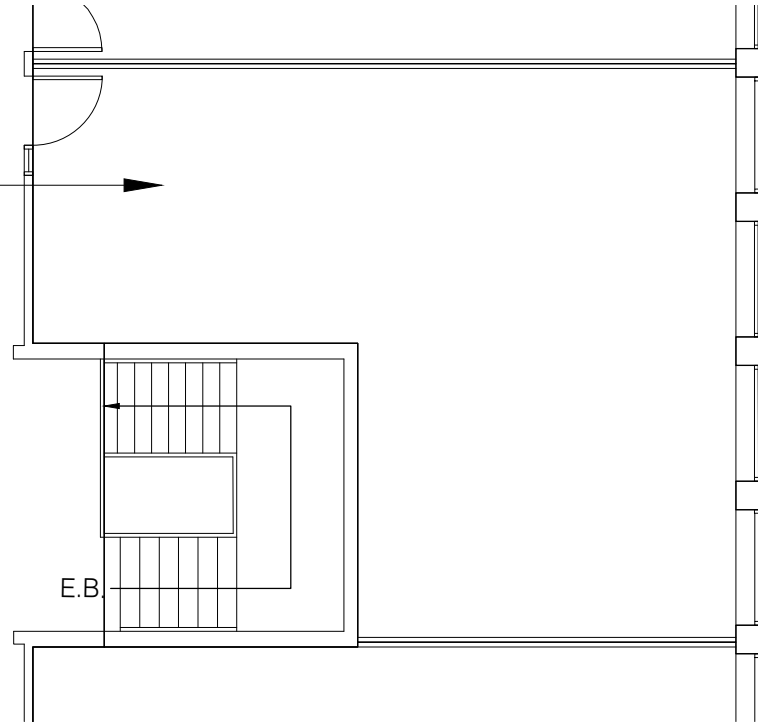


PROMENADES KING - BUILDING 2313, SPACE A212  
SCALE: 1:100



PROMENADES KING - BUILDING 2313, SPACE A214  
SCALE: 1:100

SPACE FOR LEASE  
USABLE AREA:  
602 sq. ft.  
RENTABLE AREA:  
716 sq. ft.



PROMENADES KING - BUILDING 2313, SPACE A216  
SCALE: 1:100