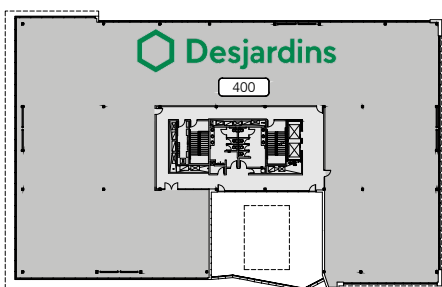
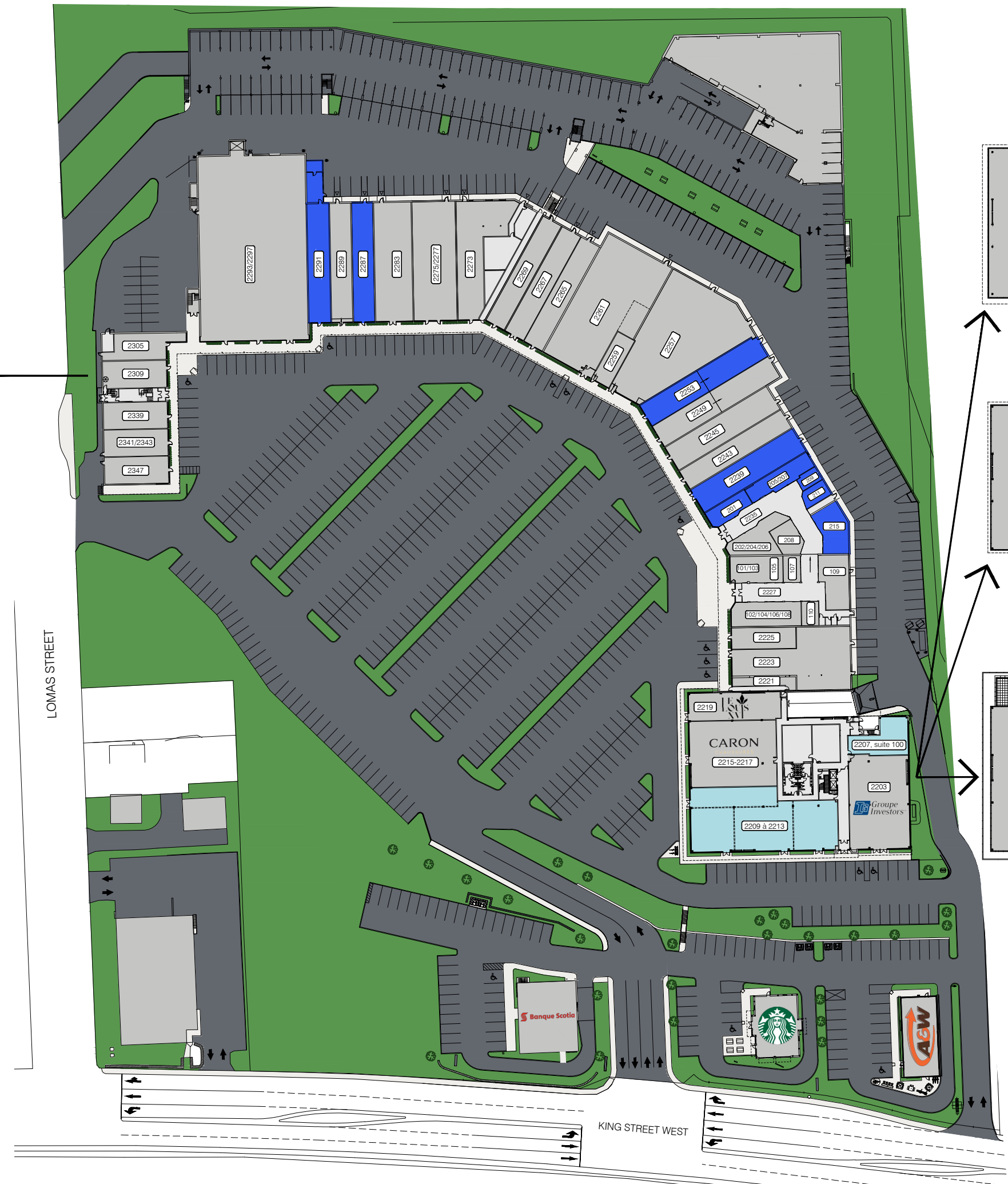
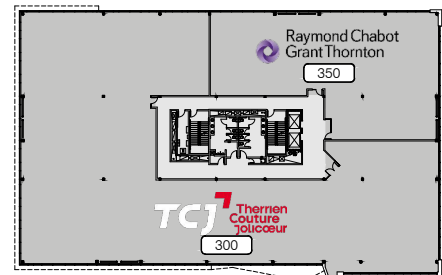


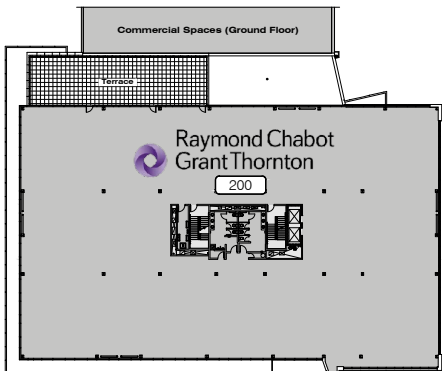
**LEVEL 2**



**LEVEL 4**



**LEVEL 3**



**LEVEL 2**

**LIST OF SPACES - COMMERCIAL PREMISES**

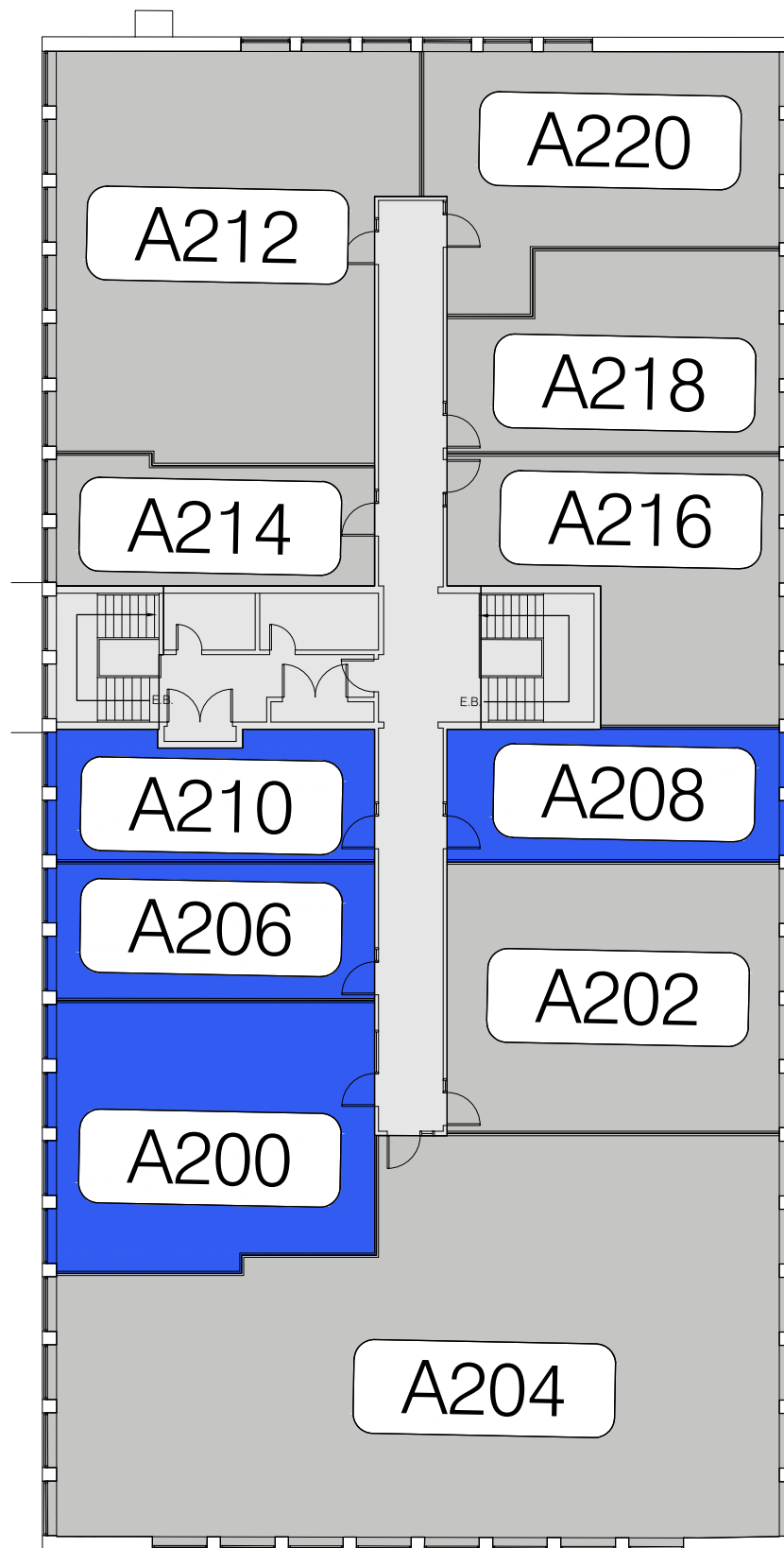
- |           |                             |                 |  |
|-----------|-----------------------------|-----------------|--|
| 2221      | LE LOUIS XVI                | 101/103         | LE CENTRE AES - EXPERTS EN VACCINATION |
| 2223      | SHOGUN SUSHI RESTAURANT     | 102/104/106/108 | BIKINI ET DENTELLE                     |
| 2225      | BIJOUTERIE SKINNER & NADEAU | 105             | CENTURY 21 EXPERT                      |
| 2239      | SPACE FOR LEASE             | 107             | MB CARTES                              |
| 2243      | BOUTIQUE SUBTILE            | 109             | CAFÉ DELUXE VIETNAMIEN                 |
| 2245      | BOUTIQUE ORIENT             | 110             | MÉTAMORPHOSE BEAUTÉ                    |
| 2249      | GOURMANDE BOUTIQUE          | 201             | LOCAL À LOUER                          |
| 2253      | SPACE FOR LEASE             | 202/204/206     | L'O DE L'AUBE                          |
| 2257      | LASER GAME ÉVOLUTION        | 205/207         | SPACE FOR LEASE                        |
| 2259      | LES BARBIERS KING           | 208             | CHAMBRE IMMOBILIÈRE DE L'ESTRIE        |
| 2261      | PHARMACIE FAMILIPRIX        | 209             | SPACE FOR LEASE                        |
| 2265      | CHOCO-LÀ                    | 211             | SPACE FOR LEASE                        |
| 2267      | BOUTIQUE FAN CLUB           | 215             | SPACE FOR LEASE                        |
| 2269      | BOUTIQUE FILLES D'ÈVE       | 2305            | TRICOT-THÉ SERRÉ                       |
| 2273      | ORANGE THEORY               | 2309            | BIJOUTERIE FERNAND TURCOTTE            |
| 2275/2277 | OPTO PLUS                   | 2339            | GTR SANTÉ                              |
| 2283      | GRENIER                     | 2341/2343       | PEINTURE DÉCO M.B.                     |
| 2287      | SPACE FOR LEASE             | 2347            | PIOSA                                  |
| 2289      | BOUTIQUE POUR LUI           |                 |  |
| 2291      | SPACE FOR LEASE             |                 |  |
| 2293/2297 | RENAISSANCE FRIPE-PRIX      |                 |  |

**LIST OF SPACES - OFFICE BUILDING**

- 2203 INVESTORS
- 2207, space 100 SPACE FOR LEASE  
RENTABLE AREA: 1 636 SQ. FT.
- 2209 to 2213 SPACE FOR LEASE (SUBDIVISIBLE)  
RENTABLE AREA: 8 313 SQ. FT. MAX.
- 2215-2217 CARON CHAUSSURES
- 2219 LE LOUIS XVI RESTAURANT
- 200 RAYMOND CHABOT GRANT THORNTON
- 300 THERRIEN COUTURE JOLICOEUR
- 350 RAYMOND CHABOT GRANT THORNTON
- 400 DESJARDINS

**LEGEND**

- SPACES FOR LEASE
- RENTED SPACES



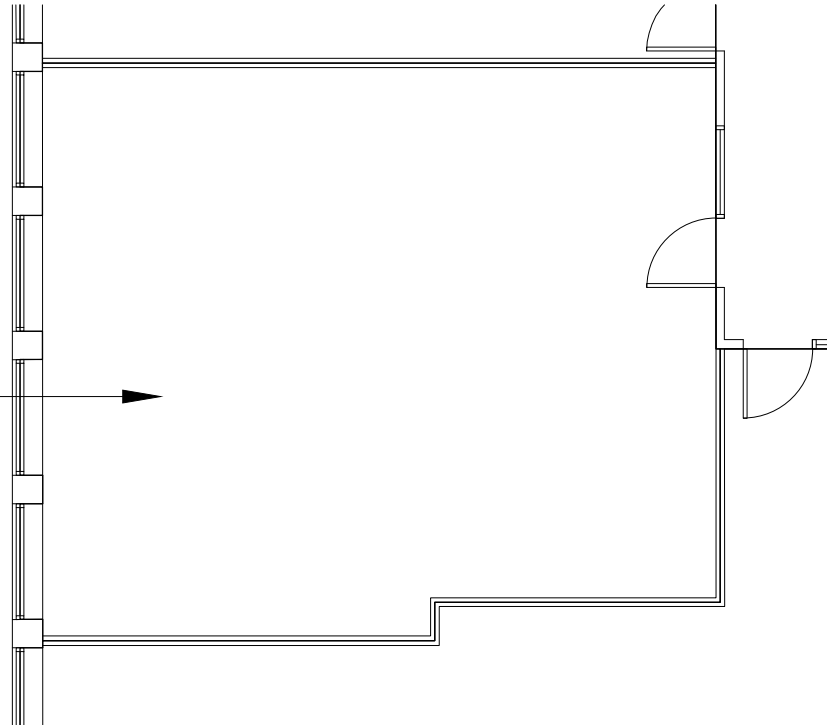
## LIST OF SPACES

- A200 SPACE FOR LEASE
- A202 O2 MASSOS
- A204 DUFRESNE, SAVARY & ASSOCIÉS INC.
- A206 SPACE FOR LEASE
- A208 SPACE FOR LEASE
- A210 SPACE FOR LEASE
- A212 ASSOCIATION DE LA CONSTRUCTION DU QUÉBEC
- A214 A. FOURNIER
- A216 GCRH
- A218 UNIFOR 78
- A220 CLINIQUE MÉDICALE DES PROMENADES KING

## LEGEND

- SPACES FOR LEASE
- EXISTING TENANTS

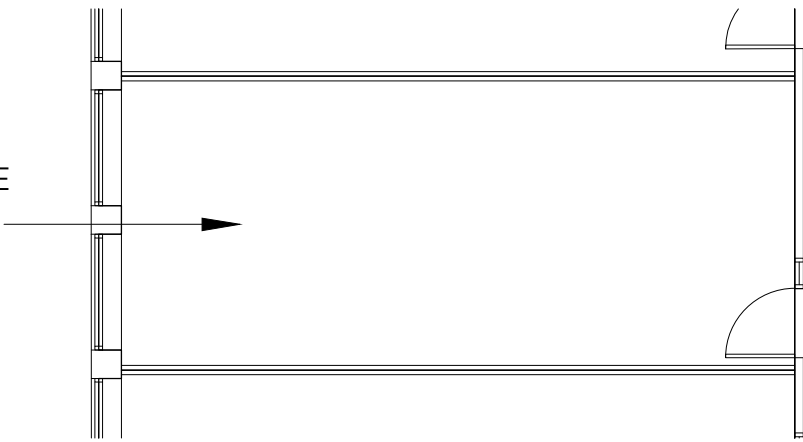
SPACE FOR LEASE  
USABLE AREA:  
734 sq. ft.  
RENTABLE AREA:  
883 sq. ft.



PROMENADES KING - BUILDING 2313, SPACE A200

SCALE: 1:100

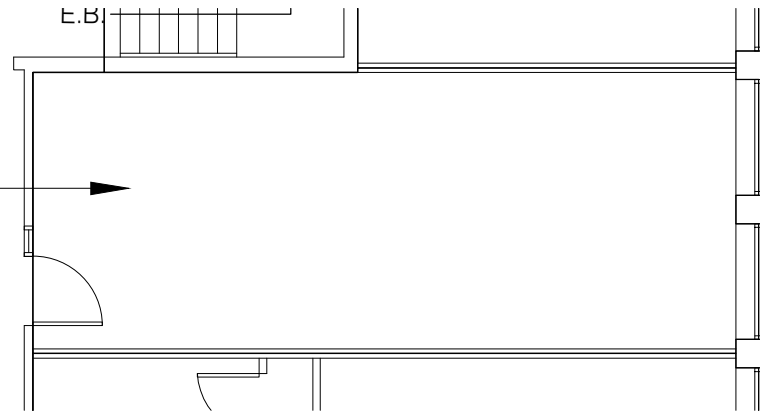
SPACE FOR LEASE  
USABLE AREA:  
382 sq. ft.  
RENTABLE AREA:  
460 sq. ft.



PROMENADES KING - BUILDING 2313, SPACE A206

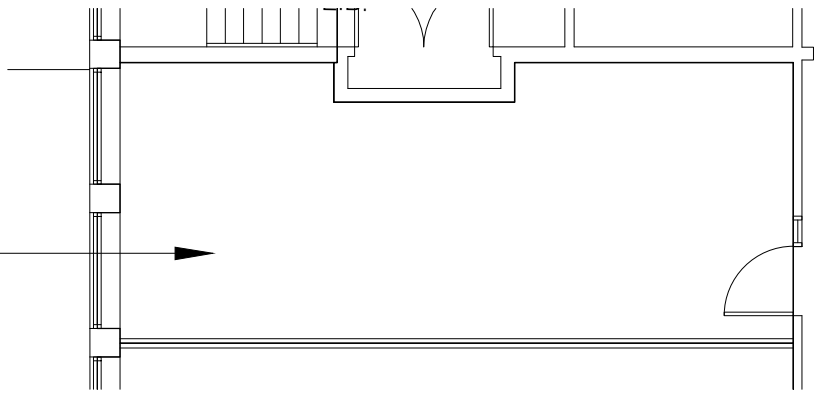
SCALE: 1:100

SPACE FOR LEASE  
USABLE AREA:  
384 sq. ft.  
RENTABLE AREA:  
463 sq. ft.



PROMENADES KING - BUILDING 2313, SPACE A208  
SCALE: 1:100

SPACE FOR LEASE  
USABLE AREA:  
352 sq. ft.  
RENTABLE AREA:  
423 sq. ft.



PROMENADES KING - BUILDING 2313, SPACE A210

SCALE: 1:100