



PROMENADES KING

2207-2219, KING STREET WEST

OFFICE AND COMMERCIAL – 1 600 to 10 000 SQ.FT.





INFORMATION

PROMENADES KING – 2207-2219, KING STREET WEST

THE PROMENADES KING OVERLOOK KING STREET WEST AND HAVE A DIVERSIFIED COMMERCIAL OFFER IN ADDITION TO A NEW SECTION OF OFFICES RESPECTING THE HIGHEST QUALITY STANDARDS. THIS REFERENCE SITE IN SHERBROOKE WILL PROVIDE AN UNPARALLELED WORKING ENVIRONMENT WHICH WILL GENERATE ADDITIONAL CUSTOMERS ON THE SITE.

LOCATION

- Promenades King shopping center is located on the north side of King Street West between Lomas and Farwell Streets.

Easy access to the shopping center:

- 4 accesses on 2 streets (King West and Lomas Streets) with traffic lights facilitating direct access to the site from both the East and the West.

DETAILS

- +/- 100,000 sq. ft. of office and commercial spaces on 4 floors.
- Elevators and green terrace on the roof overlooking the Magog River and the Bellevue and Orford mountains for employees.
- Access to a private training room on the ground floor of the building (free weights, cardio machines and room for private group lessons available on reservation) for office tenants. Changing rooms and showers on site.
- More than 900 outdoor parking spaces for clients and employees and approximately 75 indoor spaces for employees.
- Energy savings with geothermal heating and cooling system.



CURRENT TENANTS

PROMENADES KING

2207-2219, King Street West



CARON
CHAUSSURES



BISTRO LE LOUIS XVI



PHOTOS

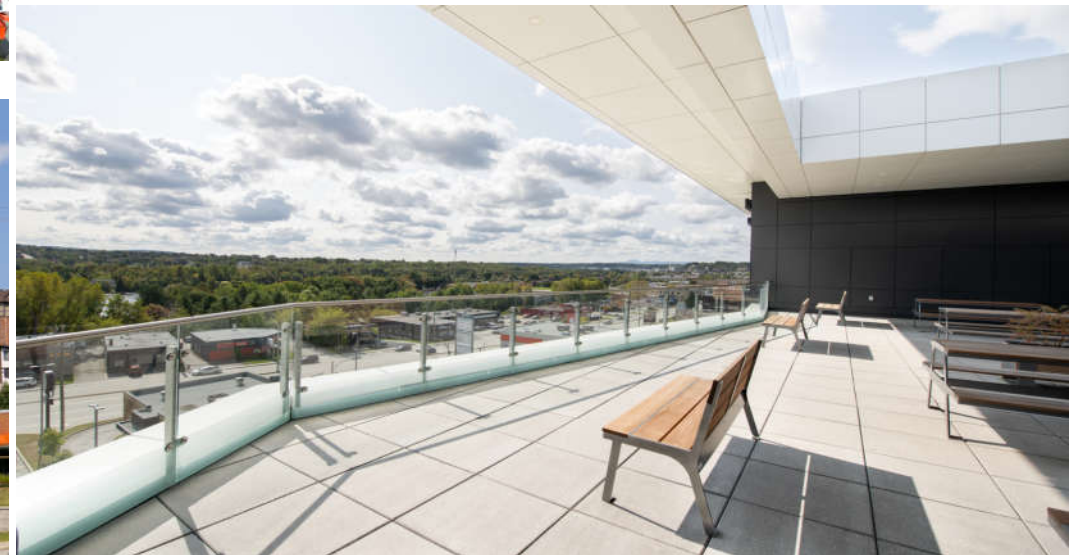
PROMENADES KING / 2207-2219 KING STREET WEST





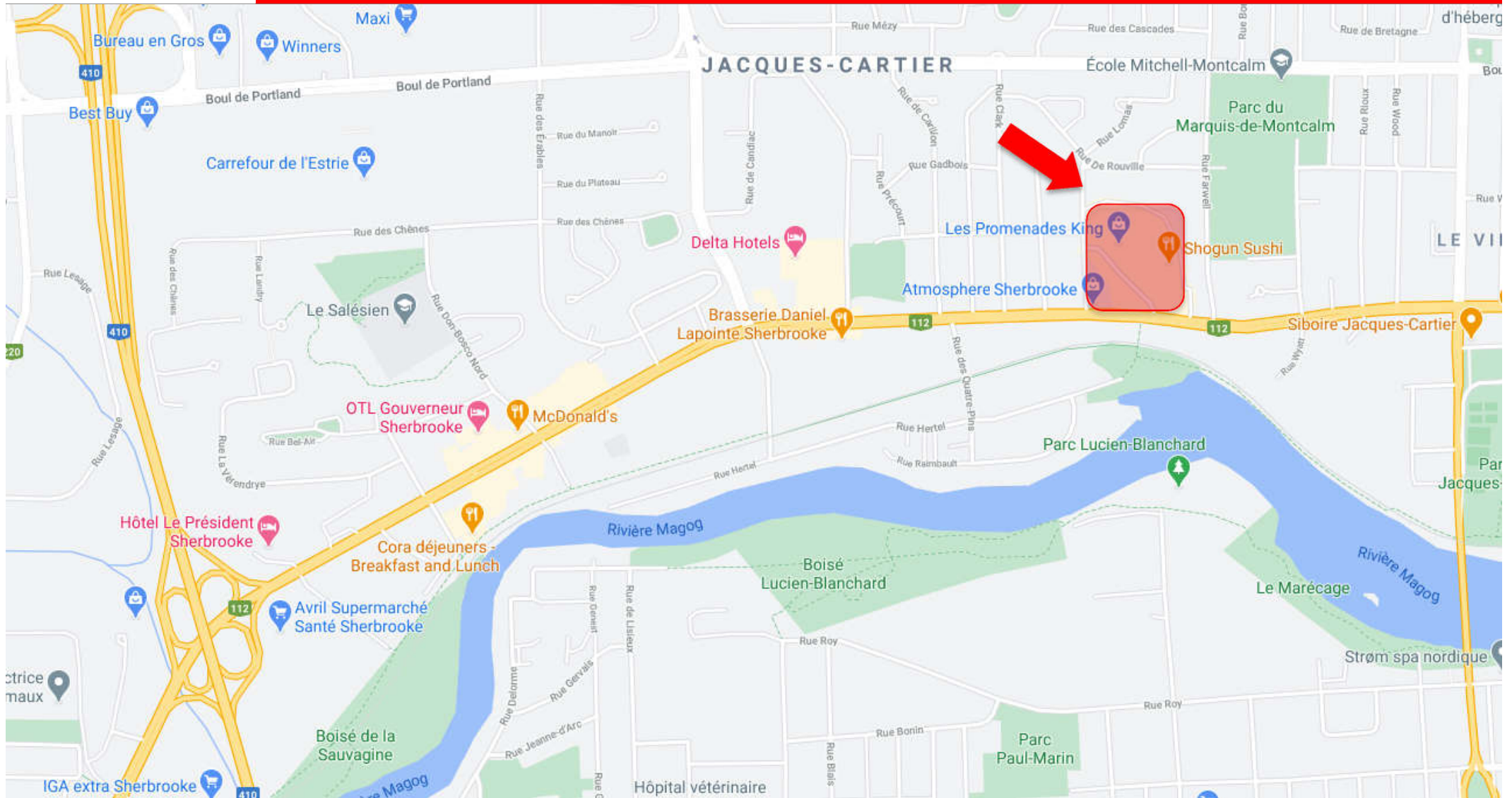
PHOTOS

PROMENADES KING / 2207-2219 KING STREET WEST





MAP

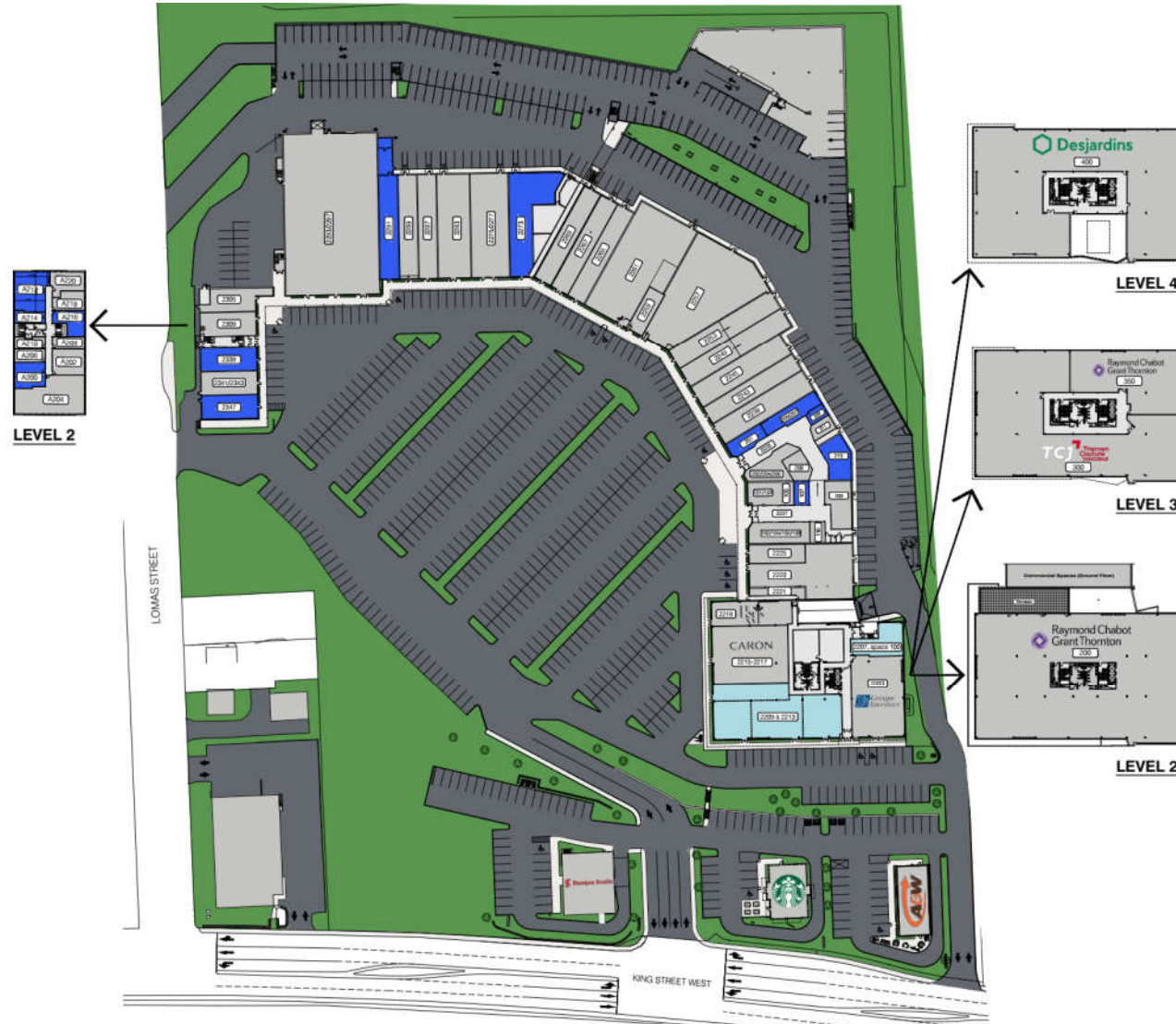


PROMENADES KING – 2207-2219, KING STREET WEST

CONTACT : GENEVIÈVE THERRIEN/ 819-348-2222
GTHERRIEN@IMMEX.CA / IMMEX.CA



SITE PLAN PROMENADES KING



LIST OF SPACES - COMMERCIAL PREMISES

22213	LE LOUIS XVI	22170	LE CENTRE AES - EXPERTS EN VACCINATION
22223	SHOQUIN SUSHI RESTAURANT	0007/0047/006/018	BKIN ET DENTELLE
22225	BIJOUTERIE DINIER & NADEAU	22227	CENTURY 21 EXPERT
22228	TABAGIE KING	22228	SPACE FOR LEASE
22243	BOUTIQUE SUBTILE	22229	CAFE DELUXE VIETNAMEN
22245	BOUTIQUE ORIENT	22230	MÉTAMORPHOSE BEAUTÉ
22249	GOURMANDIE BOUTIQUE	22231	LOCAL À LOUER
22252	CHAUSSURES PANDA	22232	L'O DE LAURIE
22257	LASER GAME EVOLUTION	0000/0047/006	SPACE FOR LEASE
22259	LES BARBERS KING	22233	CHANGRE IMMOBILIÈRE DE L'ESTRIE
22261	PHARMACIE FAMILIARIX	22234	SPACE FOR LEASE
22263	CHOCO-LÀ	22235	CORONNIÈRE MARIELE DUBUC
22267	BOUTIQUE FAN CLUB	22236	SPACE FOR LEASE
22268	BOUTIQUE FILLES D'ÈVE	22237	MB CARTES
22272	SPACE FOR LEASE	22238	BIJOUTERIE FERNAND TUPACOTTE
22272/22273	OPTO PLUS	22239	SPACE FOR LEASE
22263	GRENIER	22240	SPACE FOR LEASE
22267	MODE JULES VERREAULT	22241	PEINTURE DÉCO M.B.
22268	BOUTIQUE POUR L'AM	22242	SPACE FOR LEASE
22268	SPACE FOR LEASE		
22269/22270	RENAISSANCE FRÈRE-PRIX		

LIST OF SPACES - OFFICE BUILDING

22023	INVESTORS
22027, 22028, 100	SPACE FOR LEASE RENTABLE AREA: 1 636 SQ. FT.
2209, 10, 2213	SPACE FOR LEASE (SUBDIVISIBLE) RENTABLE AREA: 8 313 SQ. FT. MAX.
2215-2218	CARON CHAUSSURES
22178	LE LOUIS XVI RESTAURANT
2200	RAYMOND CHABOT GRANT THORNTON
2200	THERIEN CULTURE JOUJOUER
2200	RAYMOND CHABOT GRANT THORNTON
2200	DESJARDINS

LEGEND

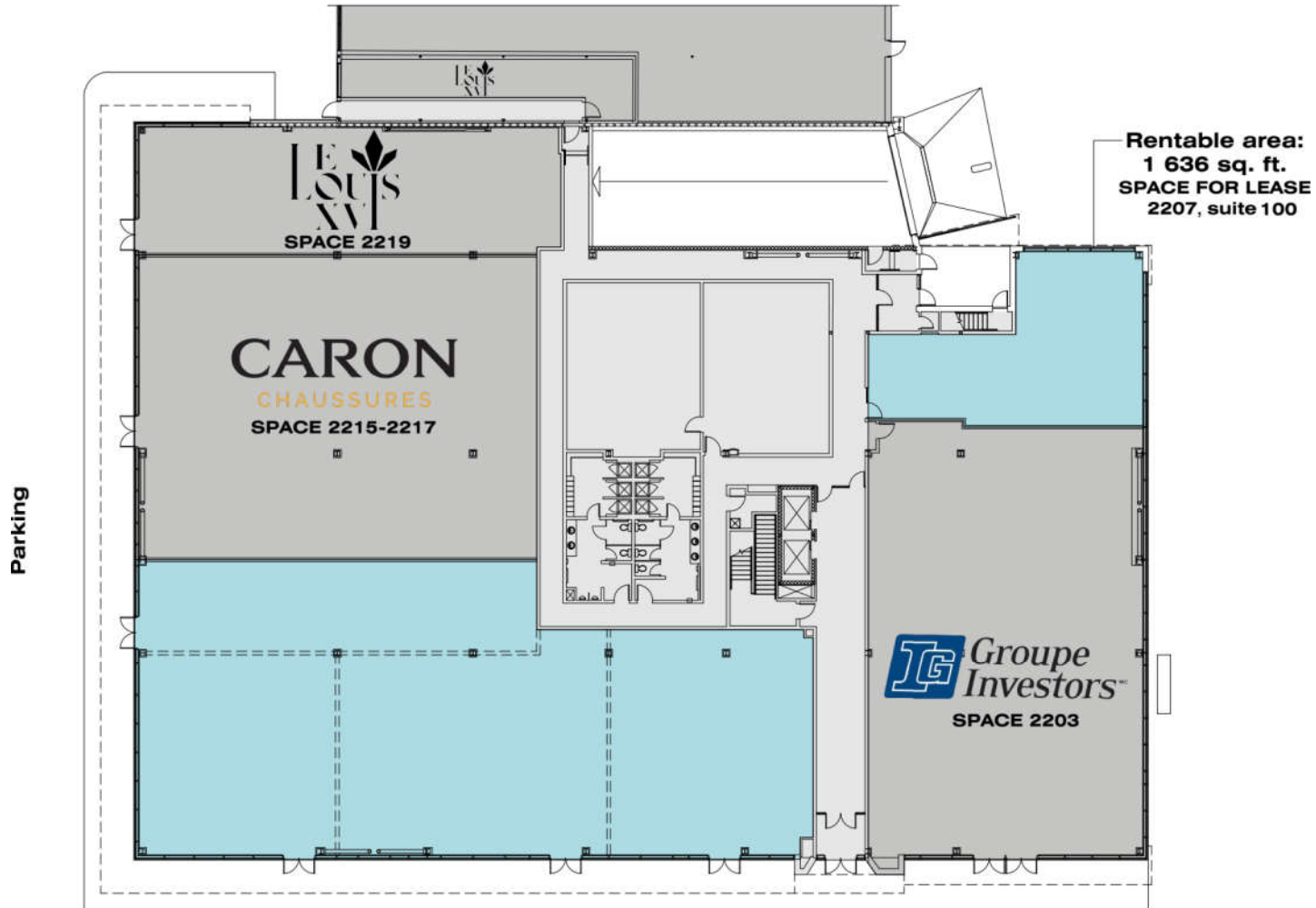
■	SPACES FOR LEASE
■	RENTED SPACES

LES PROMENADES KING



PLAN 2207, KING STREET WEST

GROUND FLOOR / PROMENADES KING



* Dividing walls can be added as required.

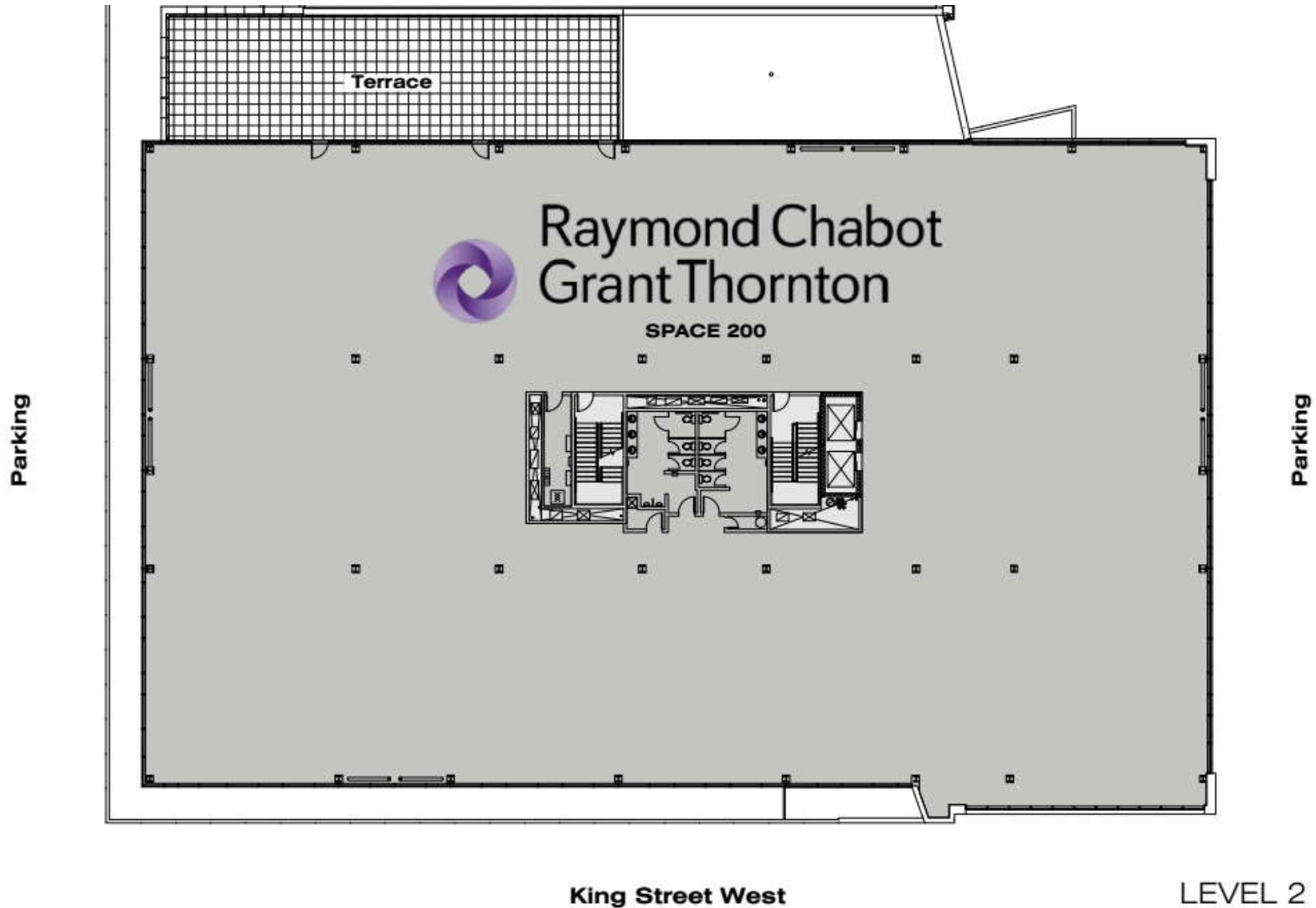
GROUND FLOOR

King Street West



PLAN 2207, KING STREET WEST

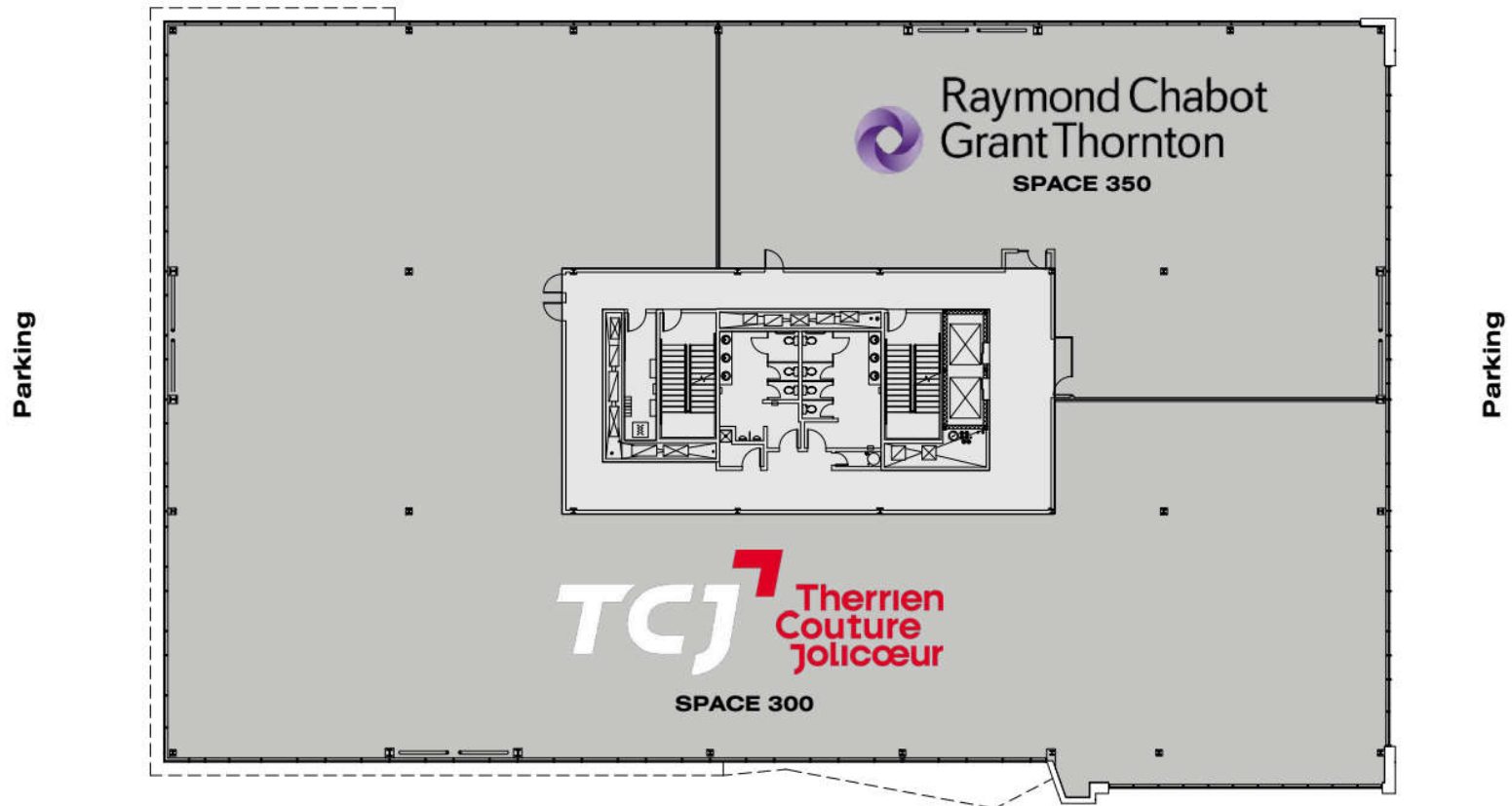
LEVEL 2 / PROMENADES KING





PLAN 2207, KING STREET WEST

LEVEL 3 / PROMENADES KING



* Dividing walls can be added as required.

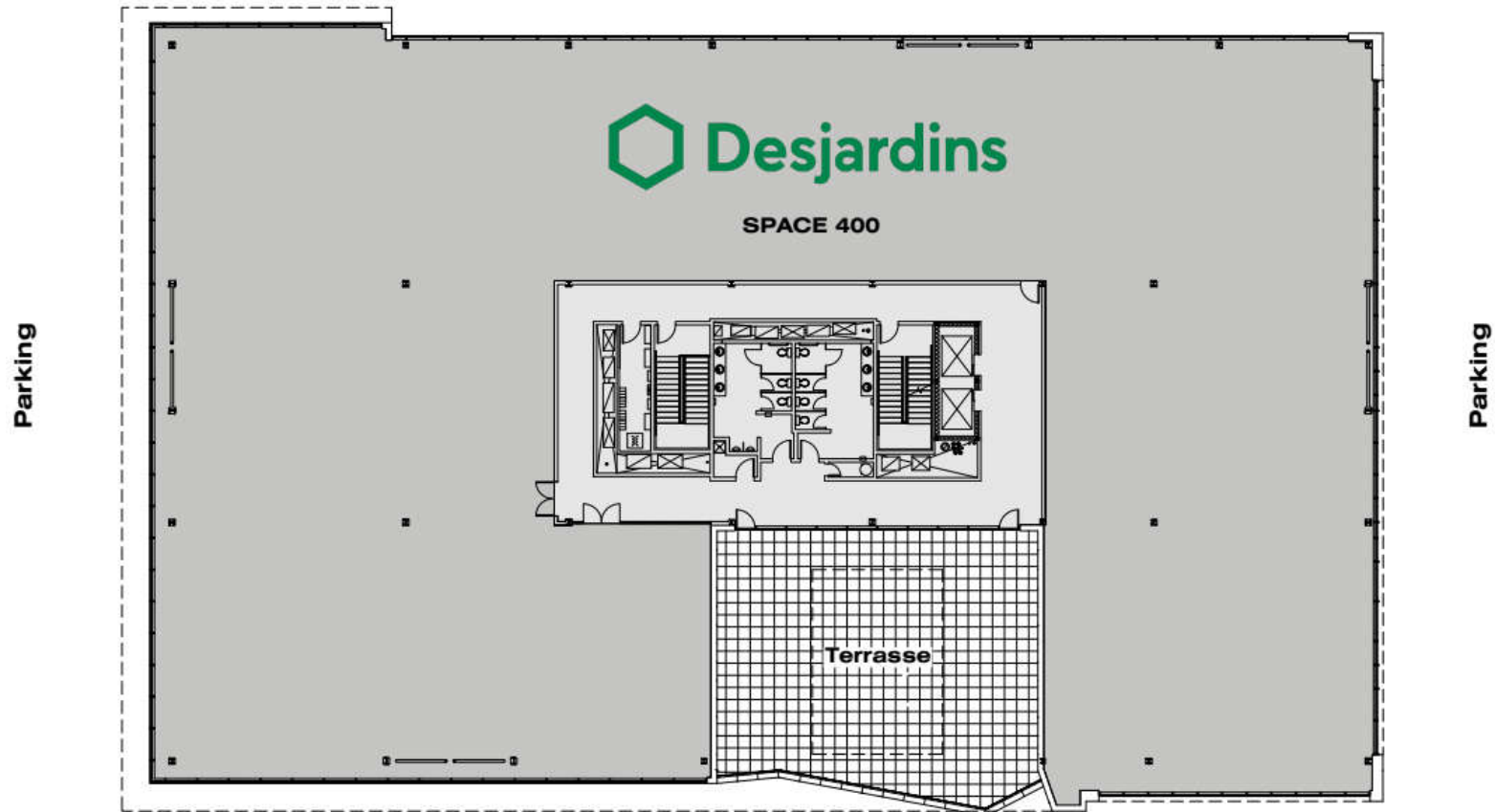
King Street West

LEVEL 3



PLAN 2207, KING STREET WEST

LEVEL 4 / PROMENADES KING



King Street West

LEVEL 4



IMMEX SOCIÉTÉ IMMOBILIÈRE

QUALITY, CUSTOMIZED AND PROMPT SERVICES

**MORE THAN 1.9 MILLION SQ. FT.
OF OFFICE, COMMERCIAL,
AND INDUSTRIAL SPACES**

FOUNDED OVER 50 YEARS AGO



**IMMEX SOCIÉTÉ IMMOBILIÈRE PROMOTES
SOCIAL ENGAGEMENT IN THE COMMUNITY
AND IS COMMITTED TO REDISTRIBUTING
1% OF ITS ANNUAL REVENUES TO VARIOUS
CAUSES AND CHARITIES.**

A HIGHLY REGARDED COMPANY

IMMEX Société Immobilière owns more than 1.9 million square feet of property in approximately 30 office, commercial, and industrial buildings, and more than 3 million square feet of land for development.

Founded over 50 years ago, IMMEX Société Immobilière has acquired extensive expertise and recognition as a leader in real estate development and management in Sherbrooke.

IMMEX SOCIÉTÉ IMMOBILIÈRE TEAM

The IMMEX Société Immobilière team is composed of more than 30 dedicated employees who are experienced in development, property management, and building maintenance. Our qualified team is made up of project managers, builders, and entrepreneurs.

QUALITY SERVICES FOR OUR TENANTS

IMMEX Société Immobilière is known as an efficient real estate developer and property manager. We take great care to maintain and modernize our buildings. Our commitment to our tenants is characterized by our personal service and our prompt response time.



IMMEX.CA