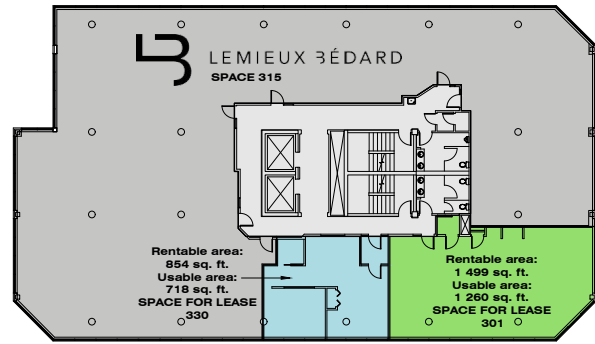
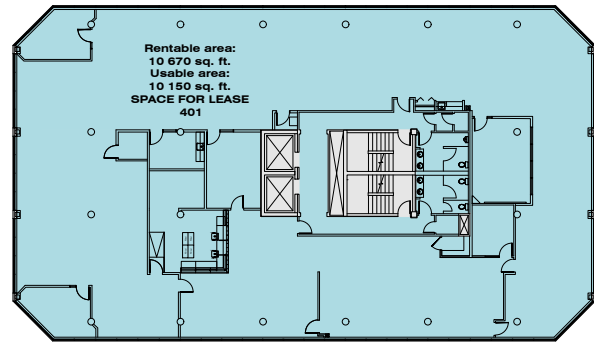


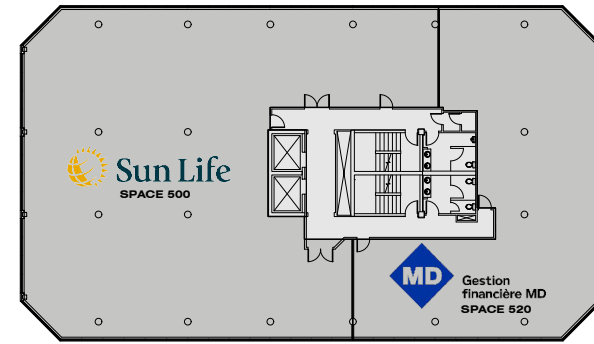
LEVEL 2



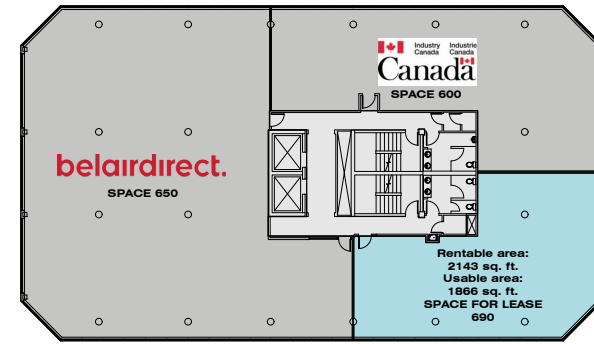
LEVEL 3



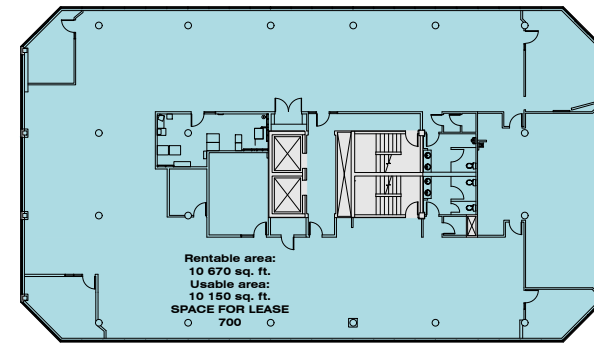
LEVEL 4



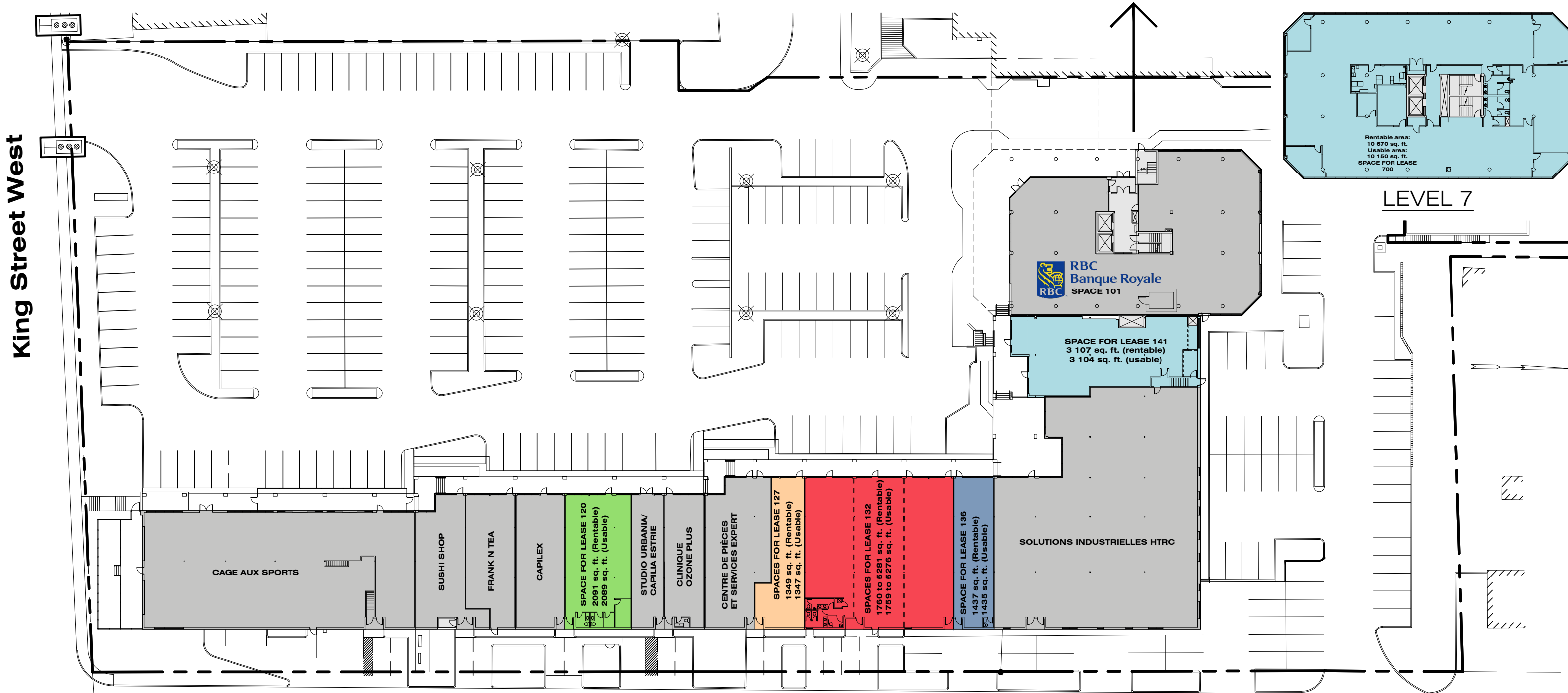
LEVEL 5

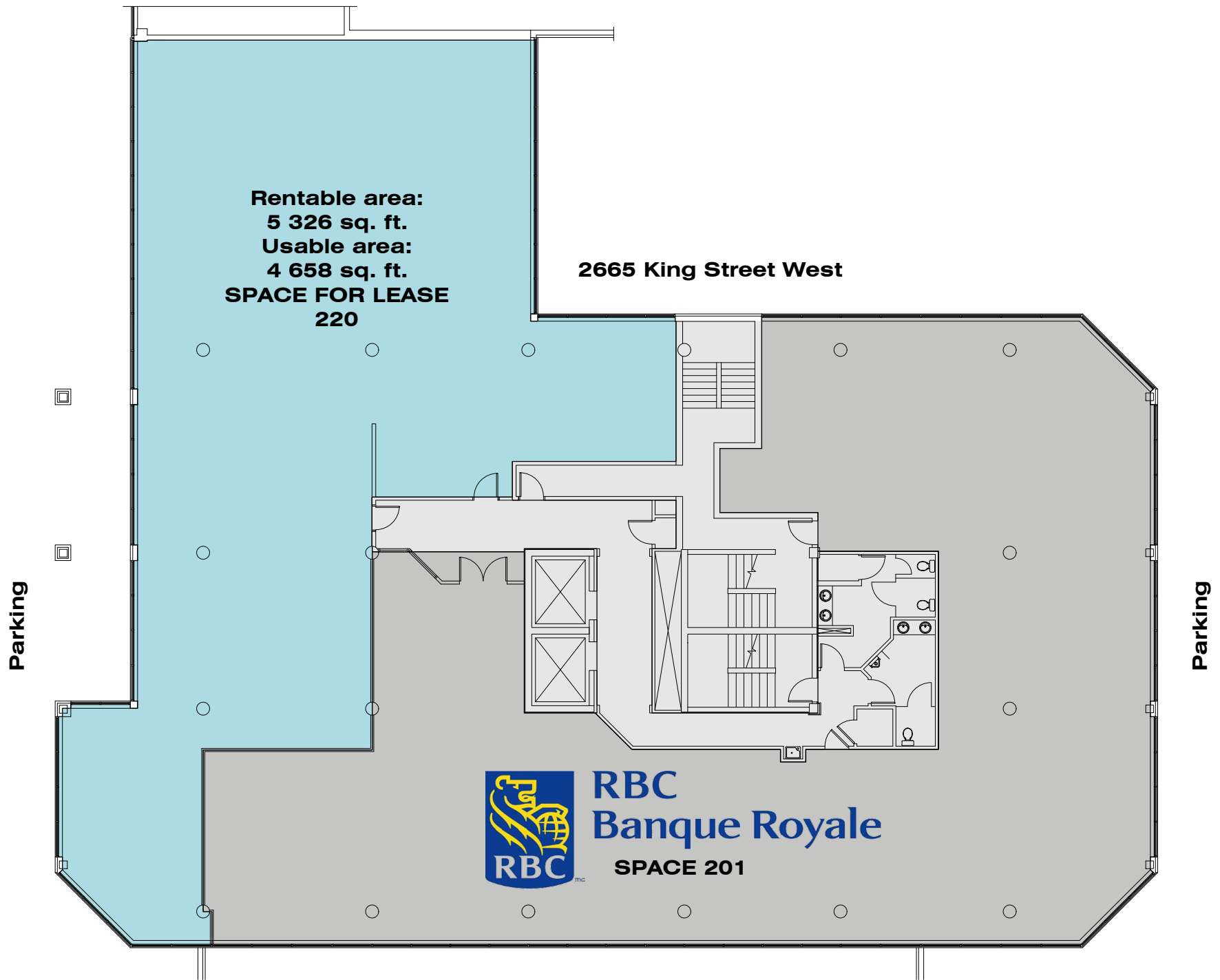


LEVEL 6



LEVEL 7





**Rentable area:
5 326 sq. ft.
Usable area:
4 658 sq. ft.
SPACE FOR LEASE
220**

2665 King Street West

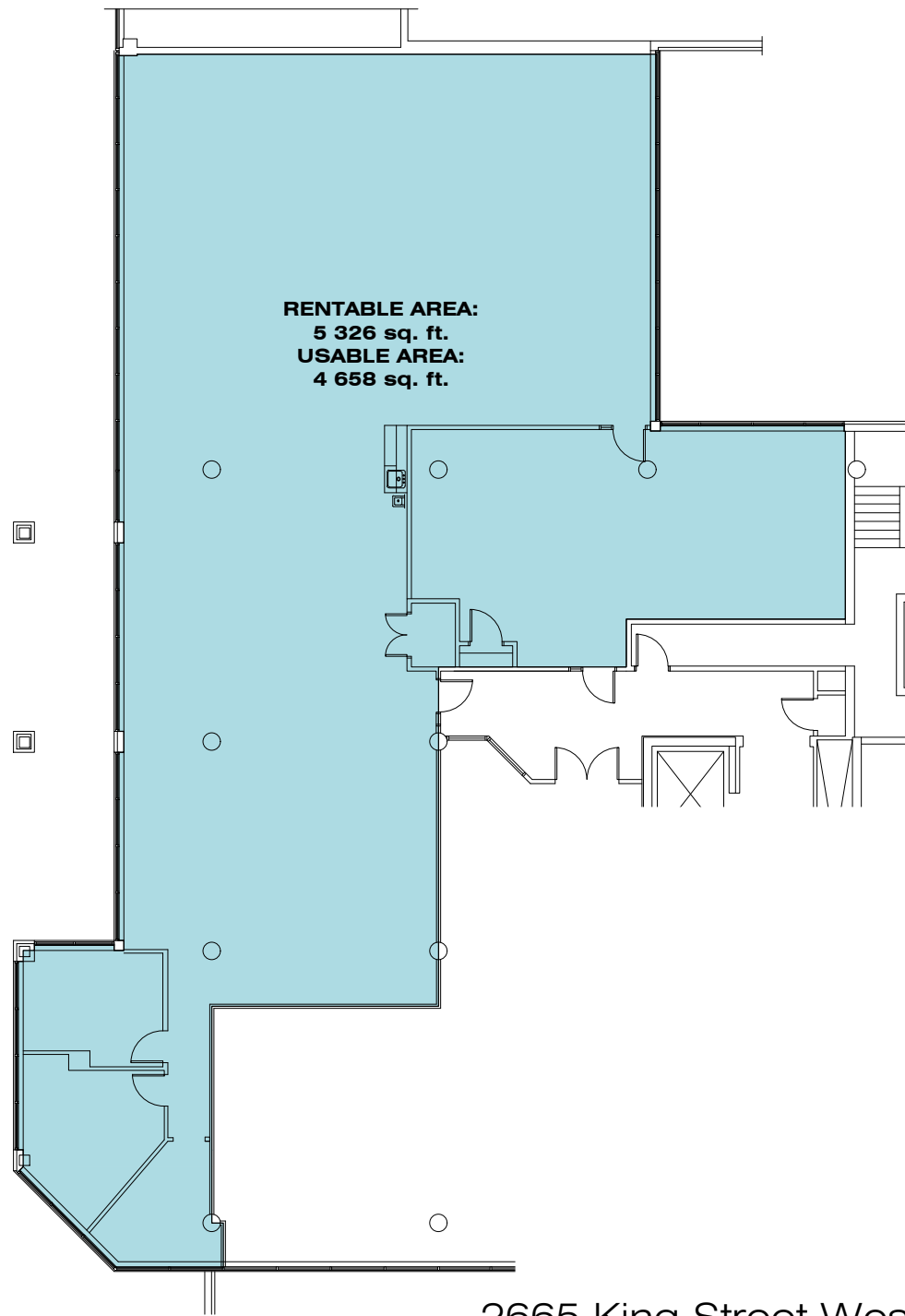


**RBC
Banque Royale**

SPACE 201

*** The interior design of the space for lease can be adjusted as needed.**

LEVEL 2



RENTABLE AREA:
5 326 sq. ft.
USABLE AREA:
4 658 sq. ft.

2665 King Street West, Level 2 - SPACE 220
SCALE: 1:200