

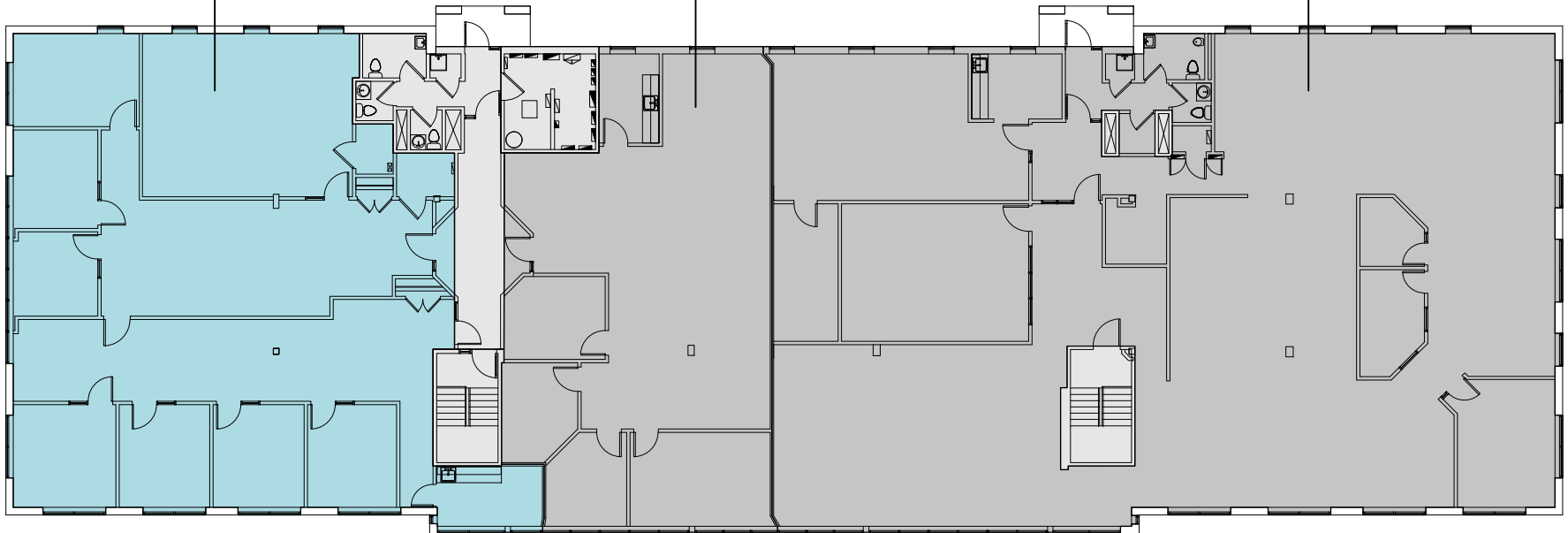
Rentable area:
3554 sq. ft.
Usable area:
3353 sq. ft.
SPACE FOR LEASE
240

Parking



Registry office

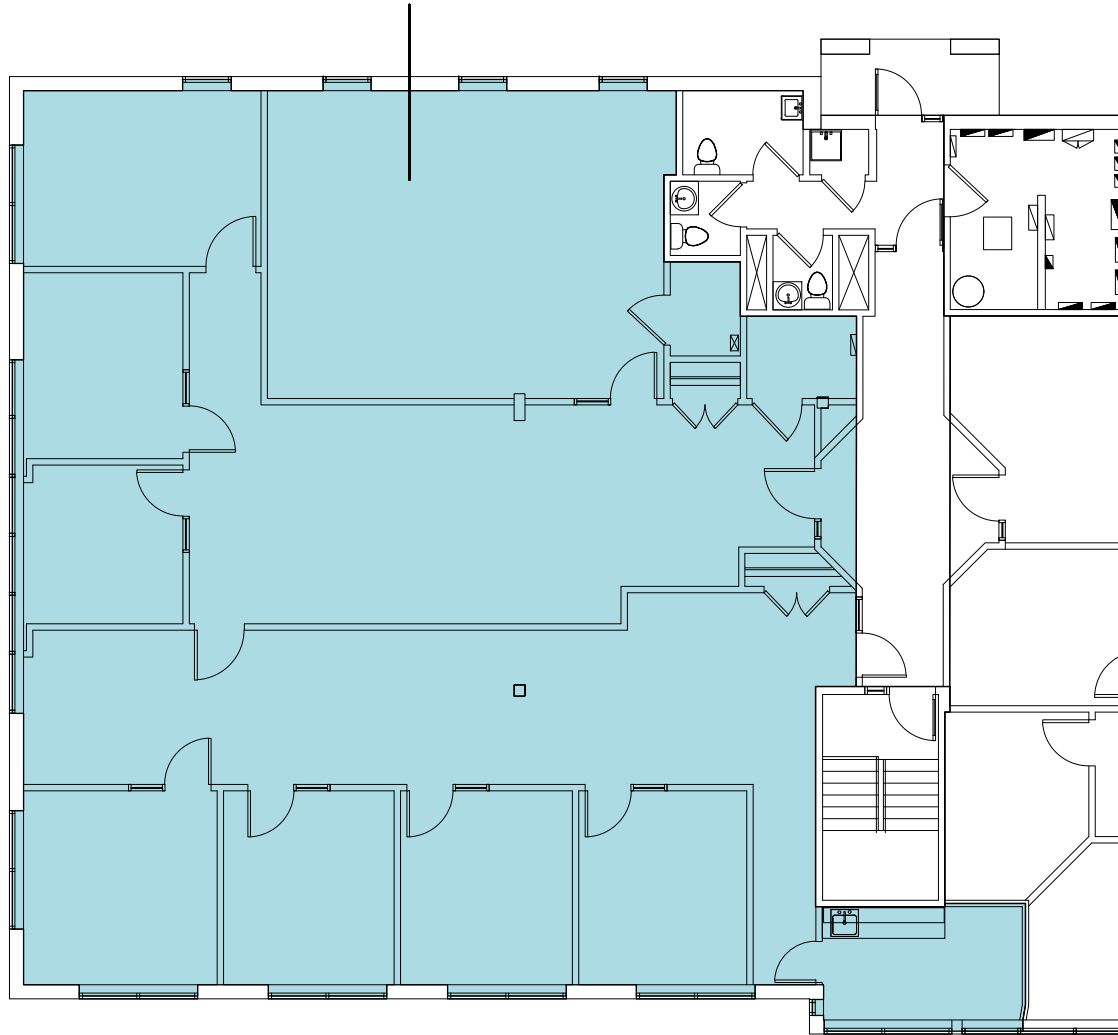
DERMAPURE



King Street West

LEVEL 2

SPACE FOR LEASE
USABLE AREA: 3 353 sq. ft.
RENTABLE AREA: 3 554 sq. ft.



3425 KING STREET WEST - SPACE 240

SCALE: 1:150