

Parking

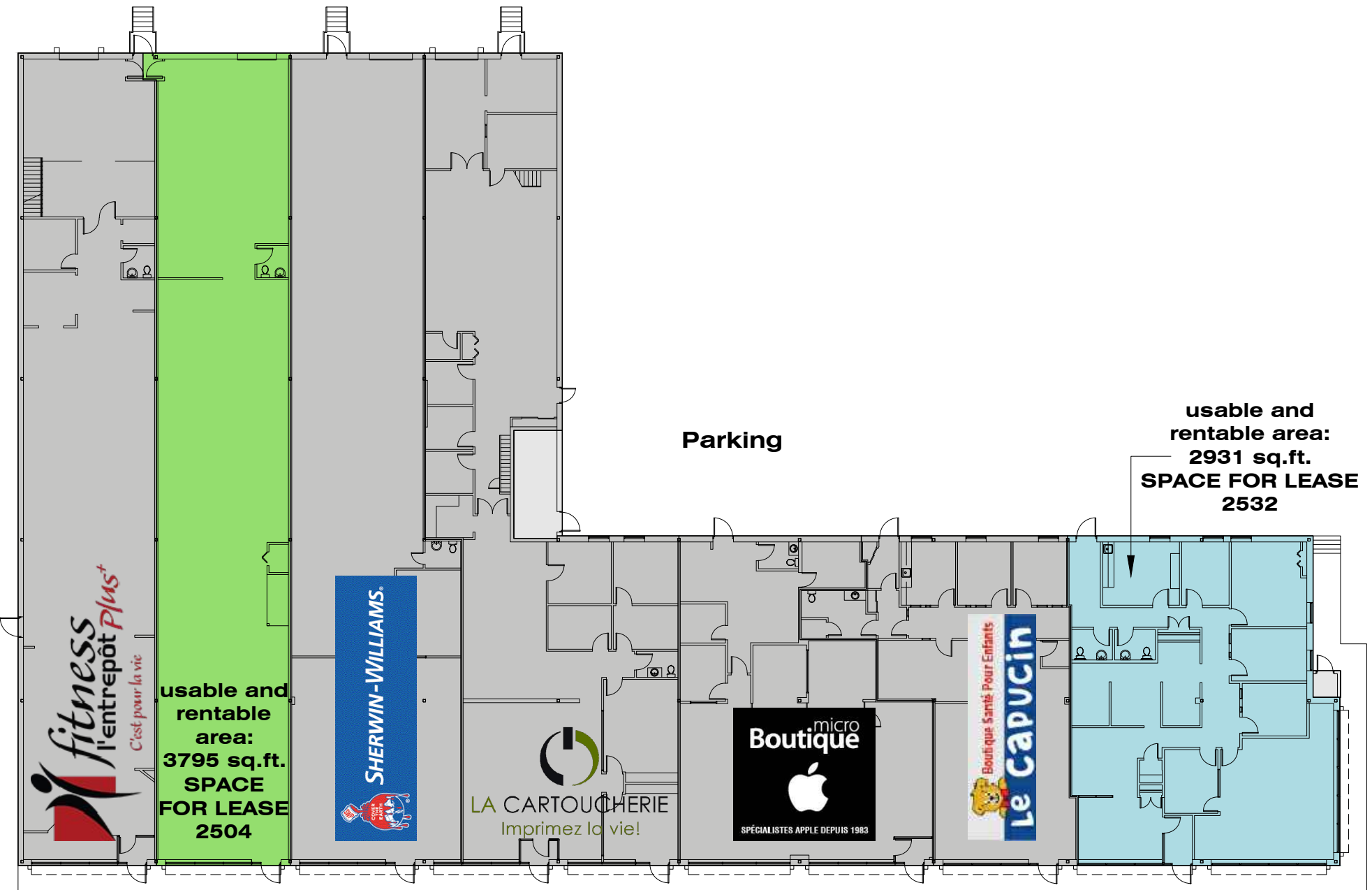
Parking

Parking

Parking

King Street West

des Quatre-Pins Street



fitness
l'entrepôt **Plus**⁺
C'est pour la vie

usable and
rentable
area:
3795 sq.ft.
**SPACE
FOR LEASE
2504**

SHERWIN-WILLIAMS
SHERWIN-WILLIAMS

LA CARTOUCHERIE
Imprimez la vie!

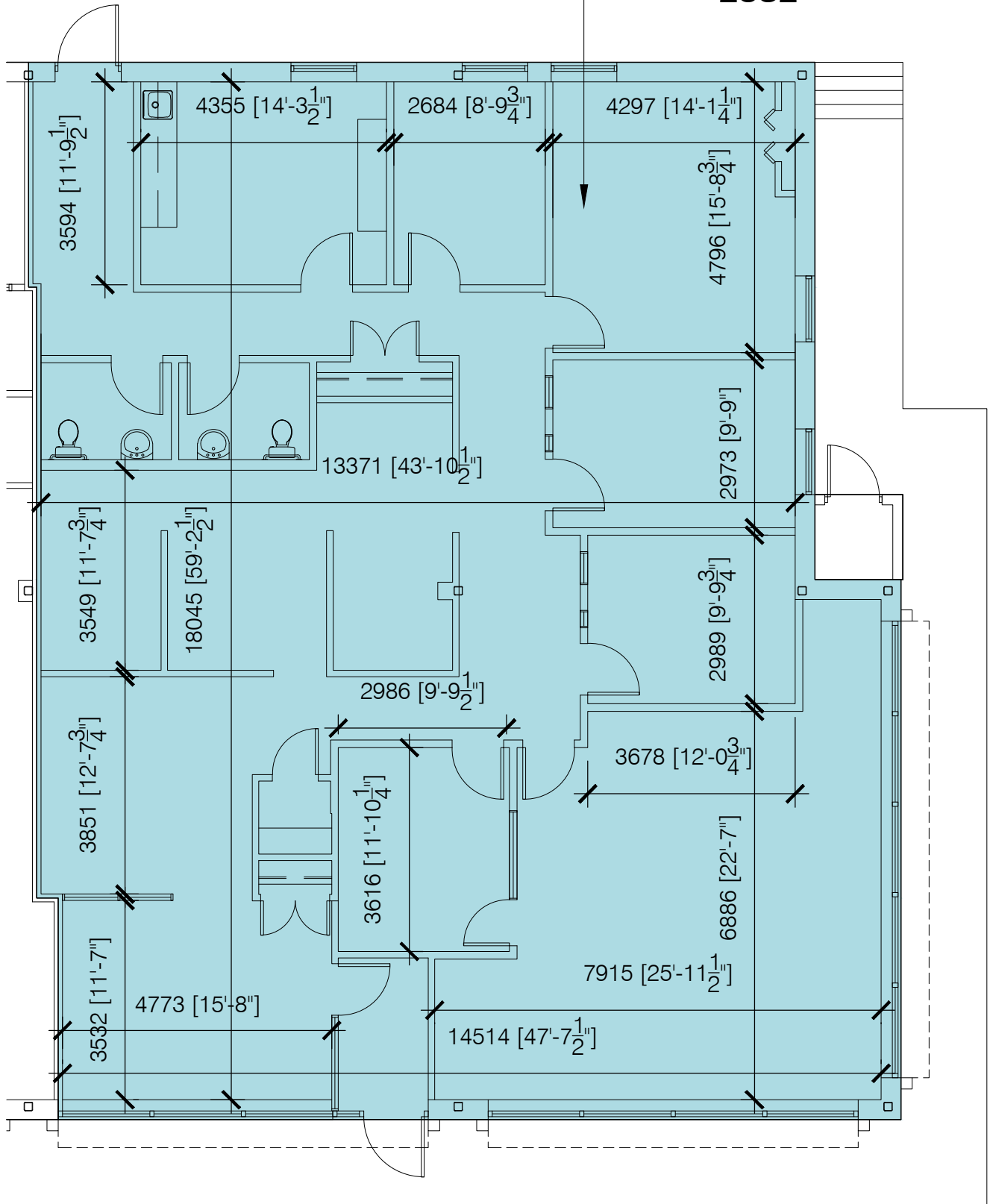
**micro
Boutique**
SPÉCIALISTES APPLE DEPUIS 1983

Le Capucin
Boutique Santé Pour Enfants

usable and
rentable area:
2931 sq.ft.
**SPACE FOR LEASE
2532**

LEVEL 1

**usable and
rentable area:
2931 sq.ft.
SPACE FOR LEASE
2532**



PLAN - SPACE 2532, KING STREET WEST
SCALE: 1:100