

Parking

Parking

Parking

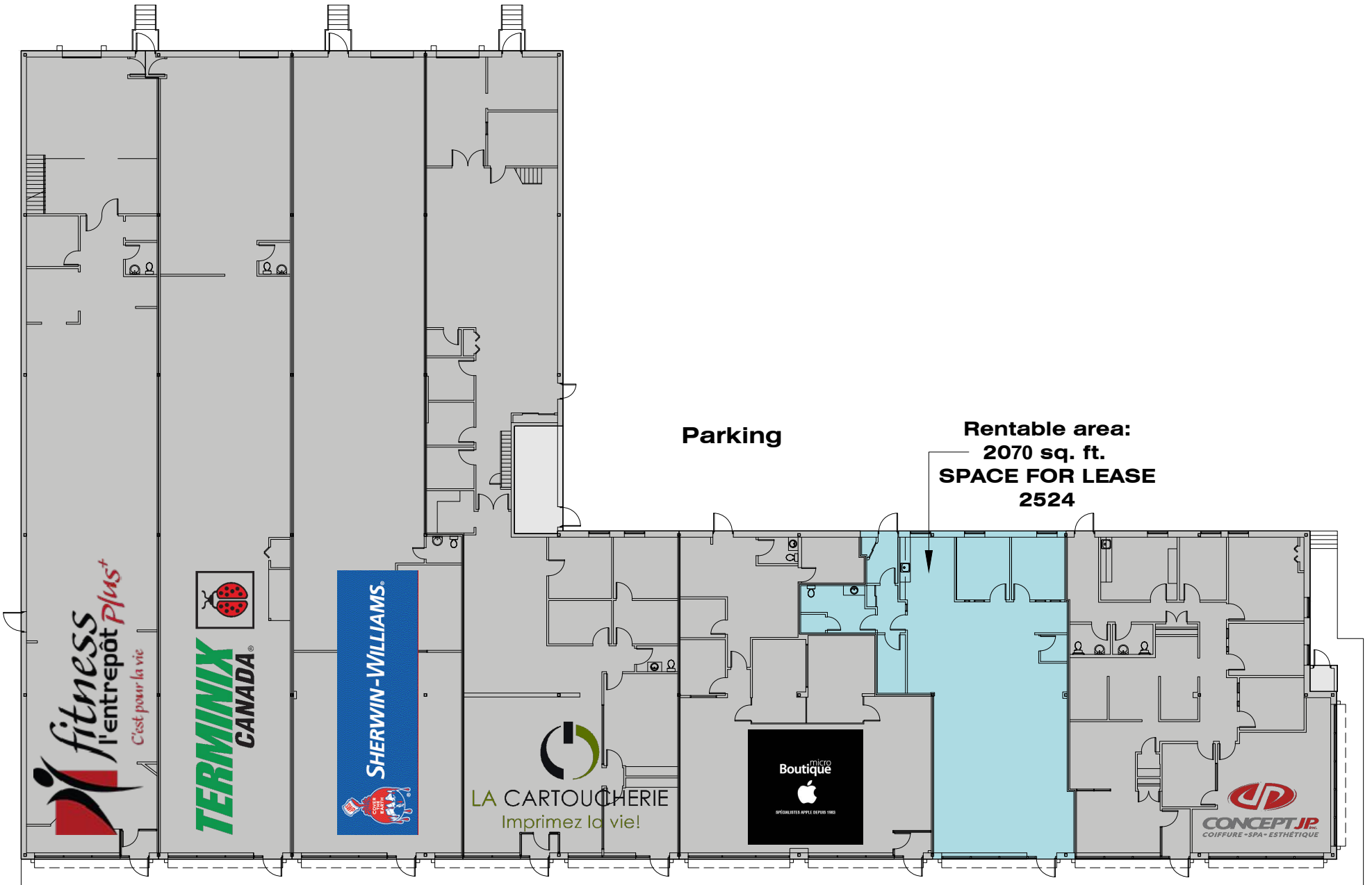
Rentable area:  
2070 sq. ft.  
**SPACE FOR LEASE**  
2524

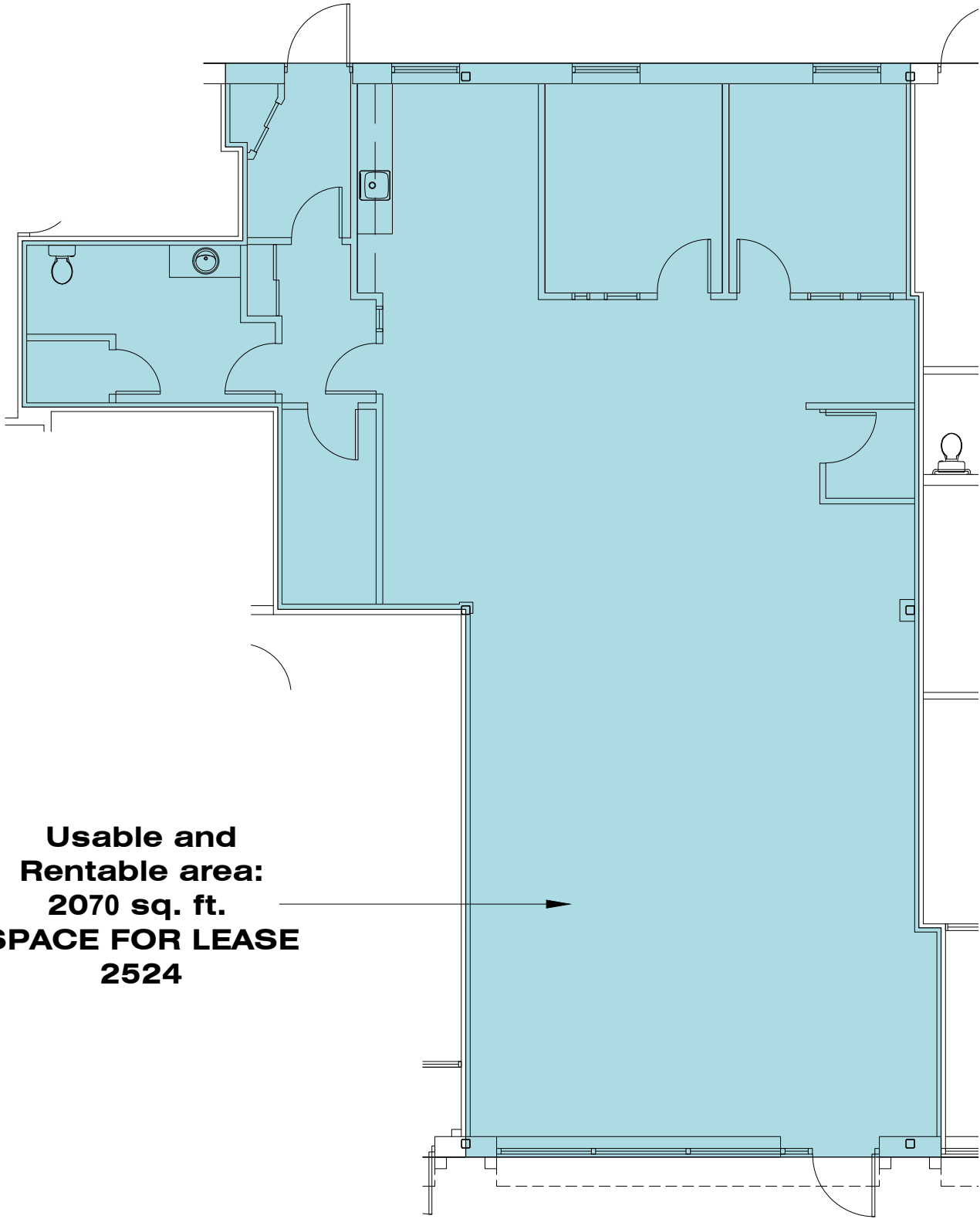
des Quatre-Pins Street

Parking

King Street West

GROUND FLOOR





**Usable and  
Rentable area:  
2070 sq. ft.  
SPACE FOR LEASE  
2524**

PLAN - SPACE 2524, KING Street WEST  
SCALE: 1:100