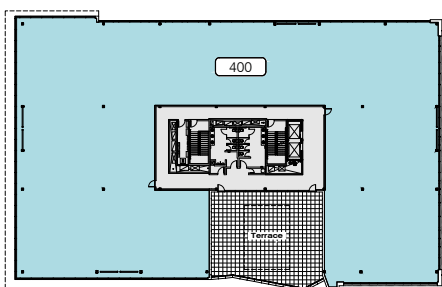
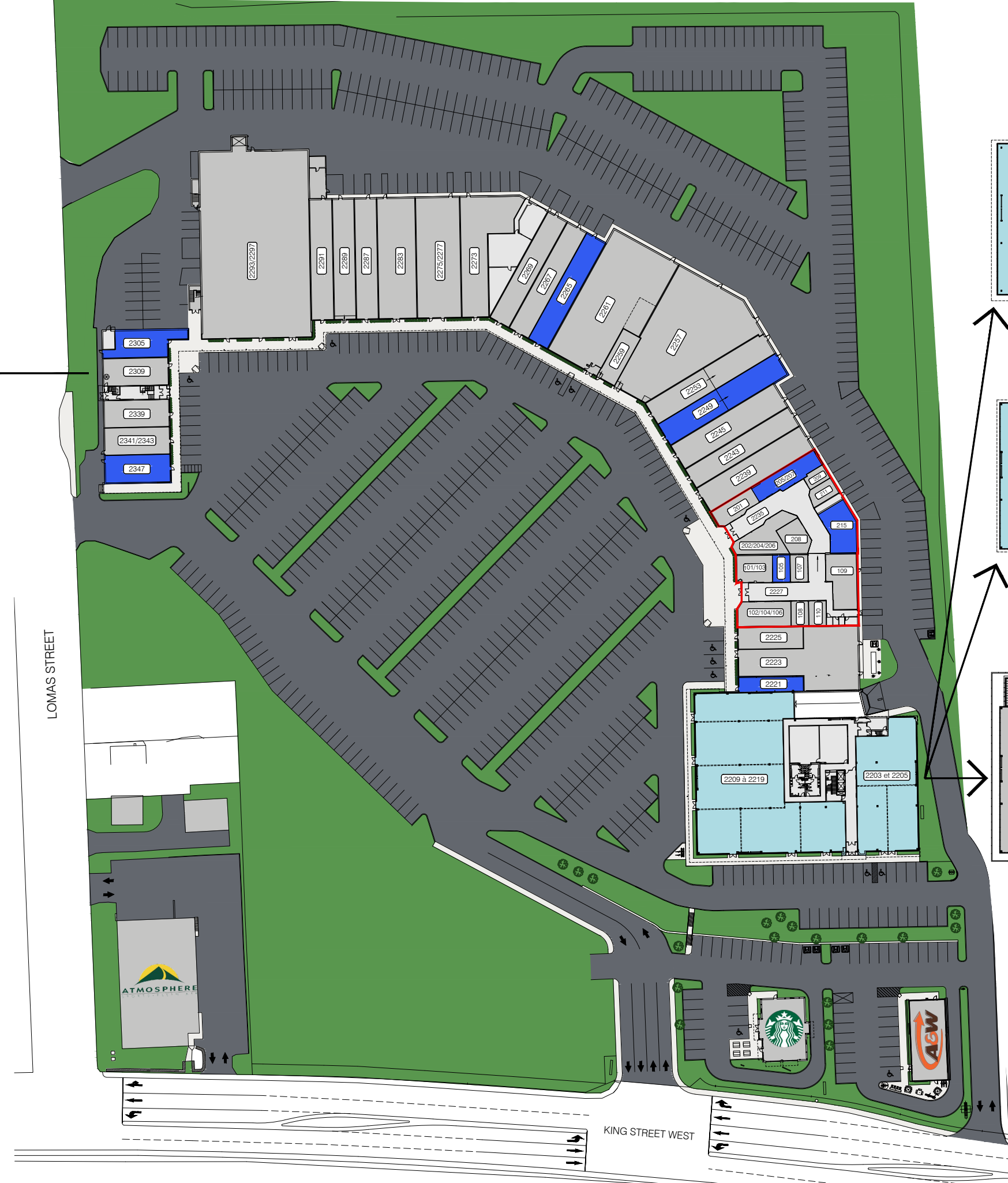
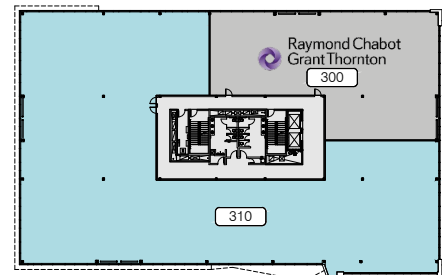


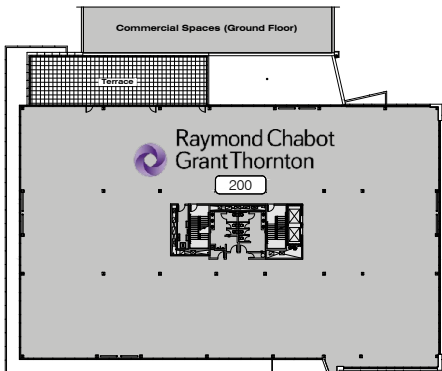
**LEVEL 2**



**LEVEL 4**



**LEVEL 3**



**LEVEL 2**

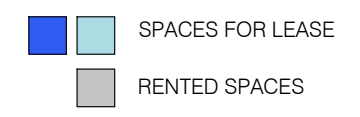
**LIST OF SPACES - COMMERCIAL PREMISES**

- |                                  |  |
|----------------------------------|--|
| 2221 SPACE FOR LEASE             | 101/103 LE CENTRE AES - EXPERTS EN VACCINATION |
| 2223 RESTAURANT SHOGUN SUSHI     | 102/104/106 BIKINI ET DENTELLE                 |
| 2225 BIJOUTERIE SKINNER & NADEAU | 105 SPACE FOR LEASE                            |
| 2239 TABAGIE KING                | 107 F. COLETTE TAILLEUR                        |
| 2243 BOUTIQUE SUBTILE            | 108 CENTURY 21 EXPERT                          |
| 2245 BOUTIQUE ORIENT             | 109 CAFÉ DELUXE VIETNAMIEN                     |
| 2249 SPACE FOR LEASE             | 110 MÉTAMORPHOSE BEAUTÉ                        |
| 2253 CHAUSSURES PANDA            | 201 BOUTIQUE JOSÉE LALIBERTÉ                   |
| 2257 LASER GAME ÉVOLUTION        | 202/204/206 L'O DE L'AUBE                      |
| 2259 LES BARBIERS KING           | 205/207 SPACE FOR LEASE                        |
| 2261 PHARMACIE FAMILIPIX         | 208 CHAMBRE IMMOBILIÈRE DE L'ESTRIE            |
| 2265 SPACE FOR LEASE             | 209 MB CARTES                                  |
| 2267 BOUTIQUE FAN CLUB           | 211 CORDONNERIE MARIELLE DUBUC                 |
| 2269 BOUTIQUE FILLES D'ÈVE       | 215 SPACE FOR LEASE                            |
| 2273 CARON CHAUSSURES            | 2305 SPACE FOR LEASE                           |
| 2275/2277 OPTO PLUS              | 2309 BIJOUTERIE FERNAND TURCOTTE               |
| 2283 GRENIER                     | 2339 GOURMANDE BOUTIQUE                        |
| 2287 MODE JULES VERREAULT        | 2341/2343 PEINTURE DÉCO M.B.                   |
| 2289 BOUTIQUE POUR LUI           | 2347 SPACE FOR LEASE                           |
| 2291 LA LIÉGEOISE                |  |
| 2293/2297 RENAISSANCE FRIPE-PRIX |  |

**LIST OF SPACE - OFFICE BUILDING**

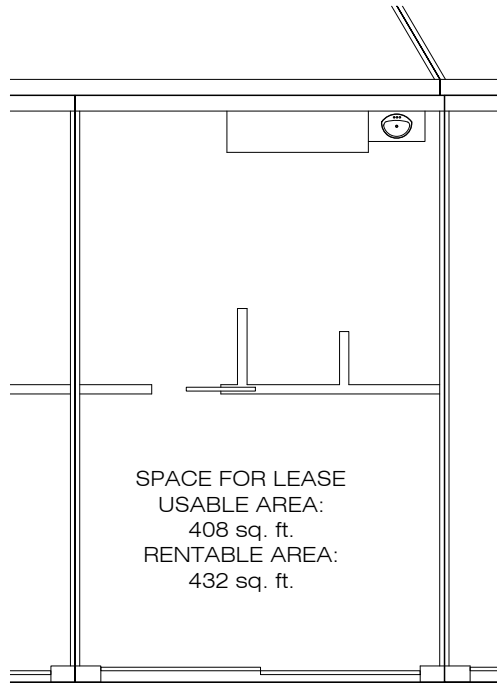
- 2203 et 2205 SPACE FOR LEASE (SUBDIVISIBLE)  
USABLE AREA: 6 191 SQ. FT.  
RENTABLE AREA: 6 718 SQ. FT.
- 2209 à 2219 SPACE FOR LEASE (SUBDIVISIBLE)  
USABLE AREA: 14 405 SQ. FT.  
RENTABLE AREA: 15 630 SQ. FT.
- 200 RAYMOND CHABOT GRANT THORNTON
- 300 RAYMOND CHABOT GRANT THORNTON
- 310 SPACE FOR LEASE (SUBDIVISIBLE)  
USABLE AREA: 15 617 SQ. FT.  
RENTABLE AREA: 19 115 SQ. FT.
- 400 SPACE FOR LEASE (SUBDIVISIBLE)  
USABLE AREA: 19 473 SQ. FT.  
RENTABLE AREA: 23 426 SQ. FT.

**LEGEND**



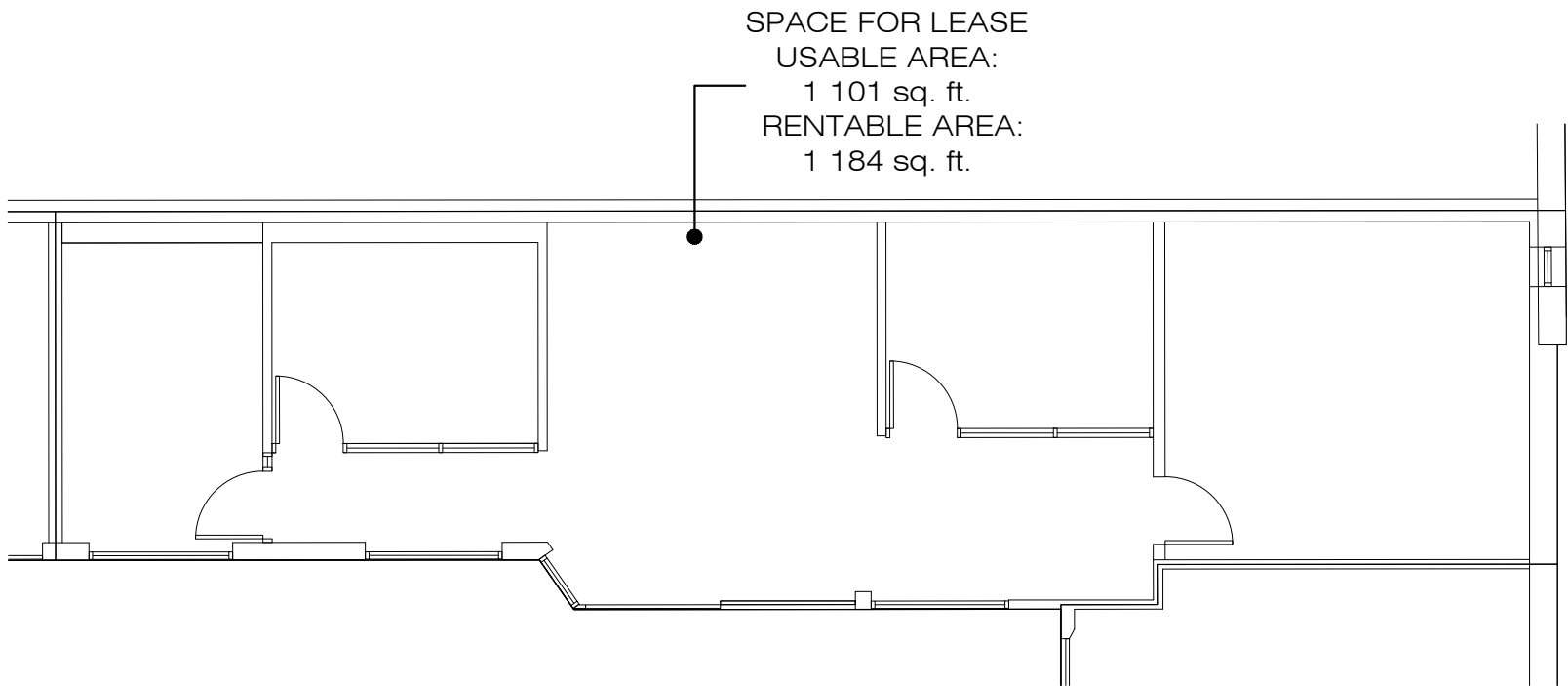


- |      |             |   |
|------|-------------|---|
|      | 101/103     | LE CENTRE AES -<br>EXPERTS EN VACCINATION |
|      | 102/104/106 | BIKINI ET DENTELLE                        |
|      | 105         | SPACE FOR LEASE                           |
| MAIL | 107         | F. COLETTE TAILLEUR                       |
| 2227 | 108         | CENTURY 21 EXPERT                         |
|      | 109         | CAFÉ DELUXE VIETNAMEIEN                   |
|      | 110         | MÉTAMORPHOSE BEAUTÉ                       |
|      | 201         | BOUTIQUE JOSÉE LALIBERTÉ                  |
|      | 202/204/206 | L'O DE L'AUBE                             |
|      | 205/207     | SPACE FOR LEASE                           |
| MAIL | 208         | CHAMBRE IMMOBILIÈRE<br>DE L'ESTRIE        |
| 2235 | 209         | MB CARTES                                 |
|      | 211         | CORDONNERIE<br>MARIELLE DUBUC             |
|      | 215         | SPACE FOR LEASE                           |



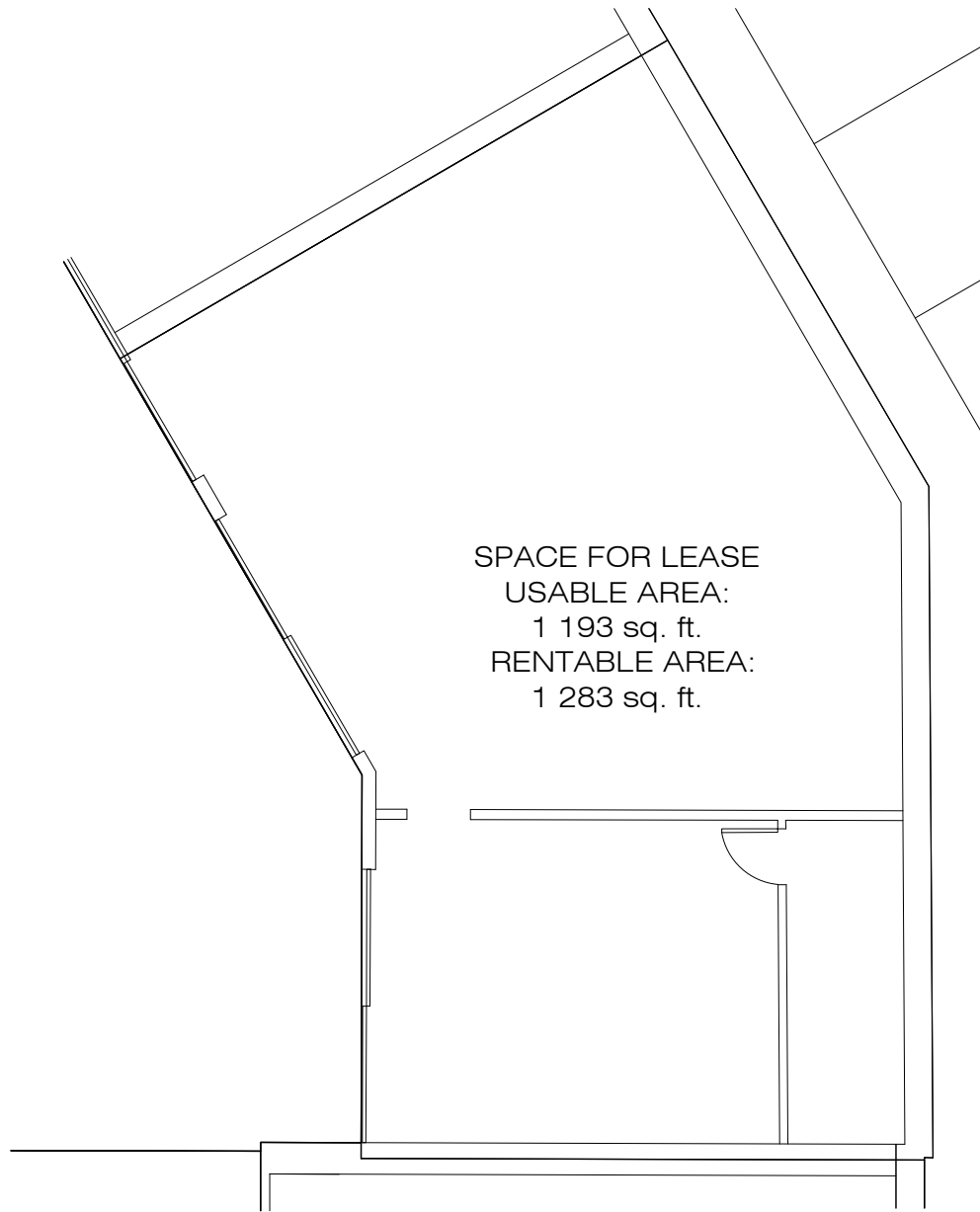
PROMENADES KING - MALL 2227, SPACE 105

SCALE: 1:100



PROMENADES KING - MALL 2235, SPACE 205/207

SCALE: 1:100



PROMENADES KING - MALL 2235, SPACE 215  
SCALE: 1:100