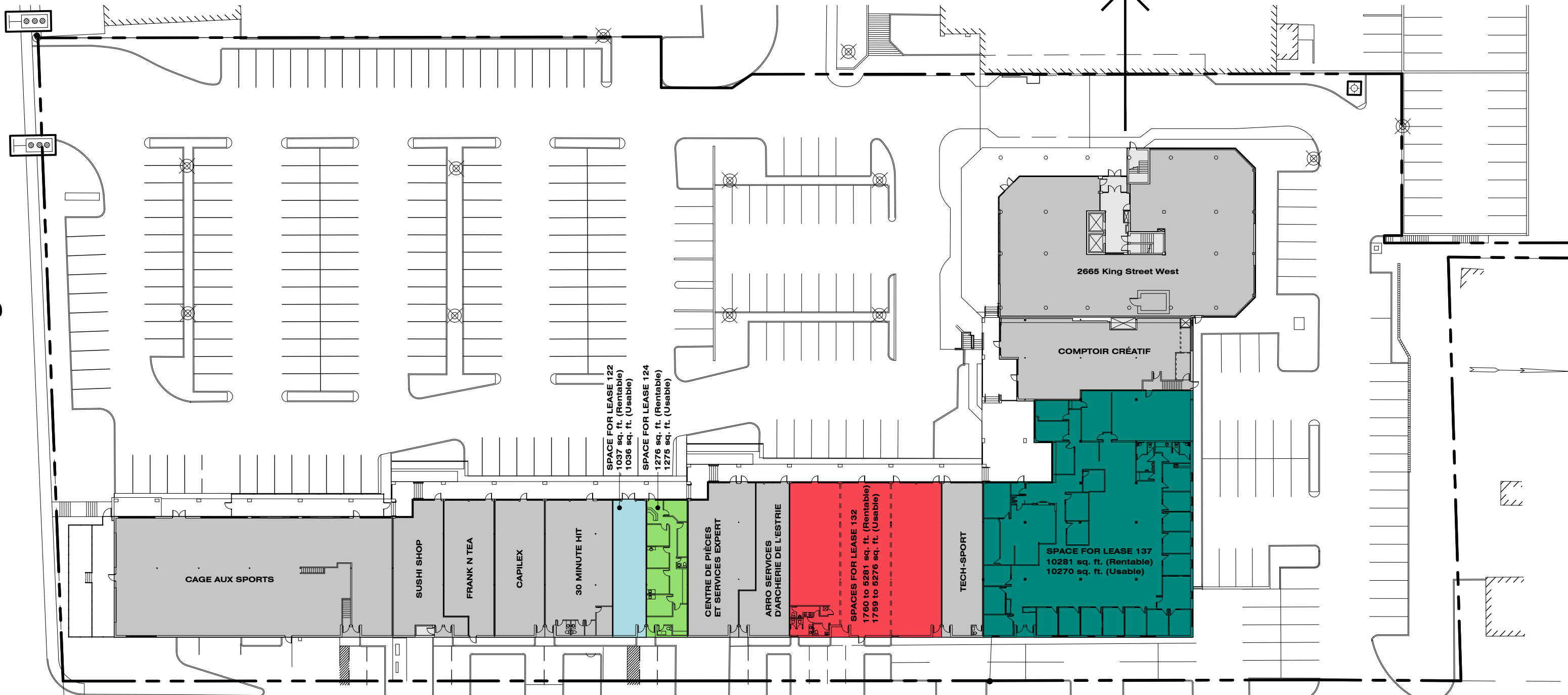
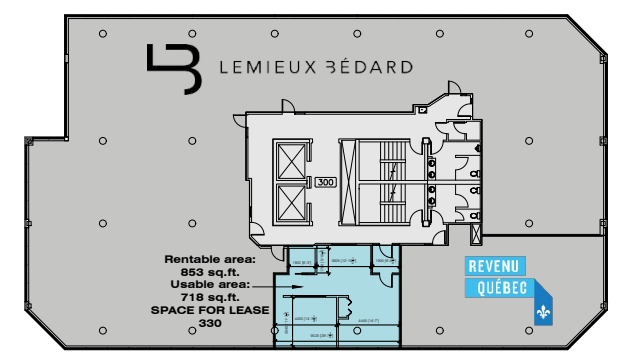


King Street West



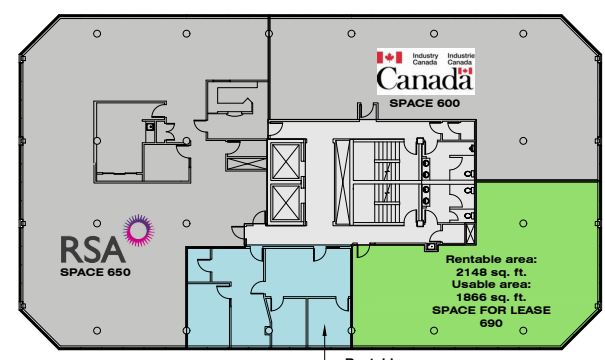
Wilson Street

PLACE DES CONGRÈS - 2655-2665 King Street West



LEVEL 3

* The interior design of the space for lease can be adjusted as needed.



LEVEL 6

* The interior design of the spaces for lease can be adjusted as needed.

Rentable area: 1109 sq. ft.
Usable area: 993 sq. ft.
SPACE FOR LEASE 670



2665 King Street West

COMPTOIR CRÉATIF

SPACE FOR LEASE 137
10281 sq. ft. (Rentable)
10270 sq. ft. (Usable)

SPACE FOR LEASE 122
1037 sq. ft. (Rentable)
1036 sq. ft. (Usable)

SPACE FOR LEASE 124
1276 sq. ft. (Rentable)
1275 sq. ft. (Usable)

SPACES FOR LEASE 132
1760 to 5281 sq. ft. (Rentable)
1759 to 5276 sq. ft. (Usable)

CAGE AUX SPORTS

SUSHI SHOP

FRANK N TEA

CAPILEX

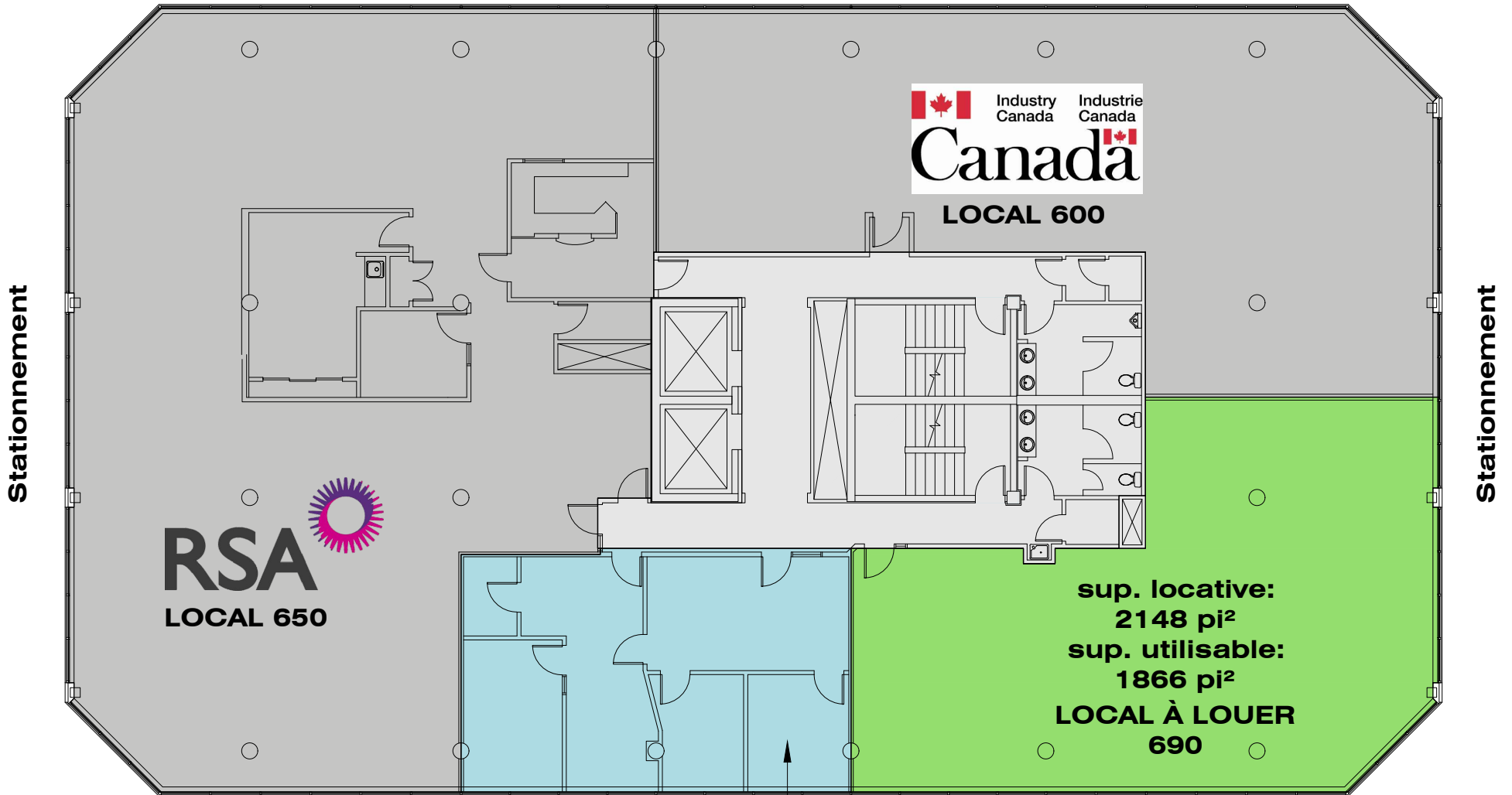
30 MINUTE HIT

CENTRE DE PIÈCES
ET SERVICES EXPERT

ARRO SERVICES
D'ARCHERIE DE L'ESTRIE

TECH-SPORT

2665, rue King Ouest

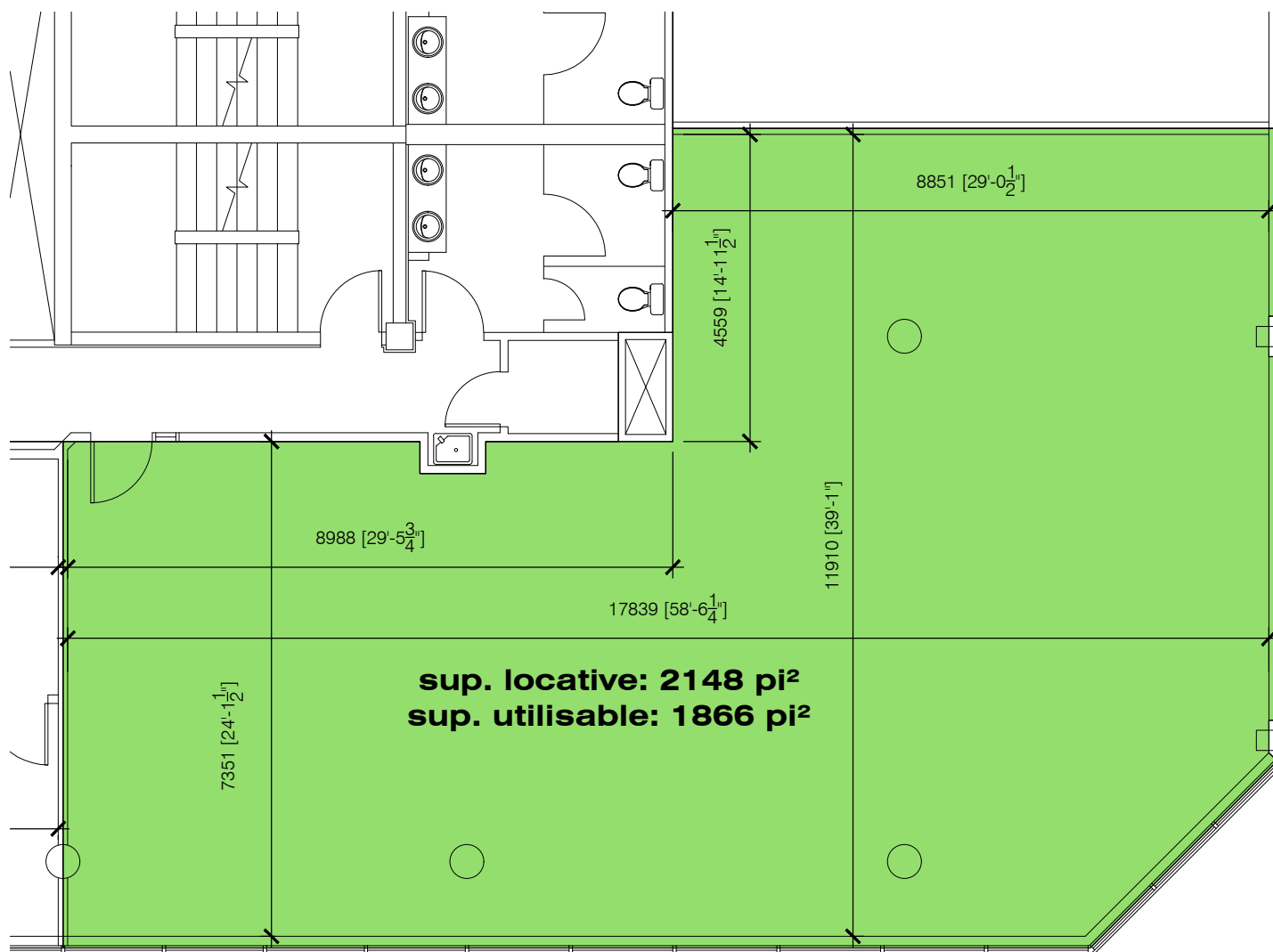


* L'aménagement intérieur des espaces locatifs peut être ajusté au besoin.

sup. locative:
1109 pi²
sup. utilisable:
963 pi²
LOCAL À LOUER
670

sup. locative:
2148 pi²
sup. utilisable:
1866 pi²
LOCAL À LOUER
690

NIVEAU 6



NIVEAU 6 - LOCAL 690

ÉCH: 1:100