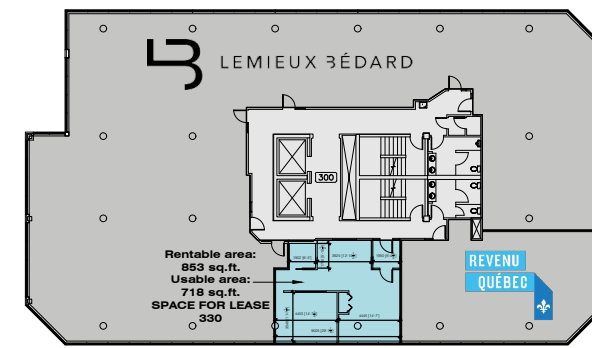
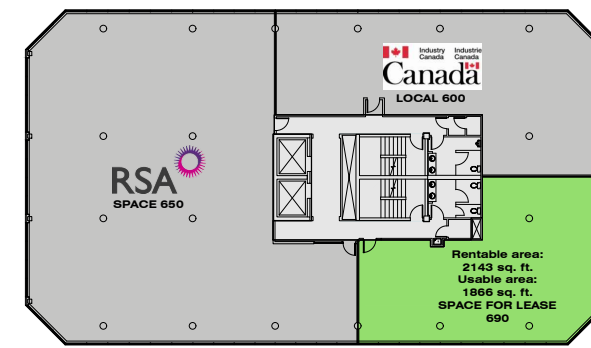


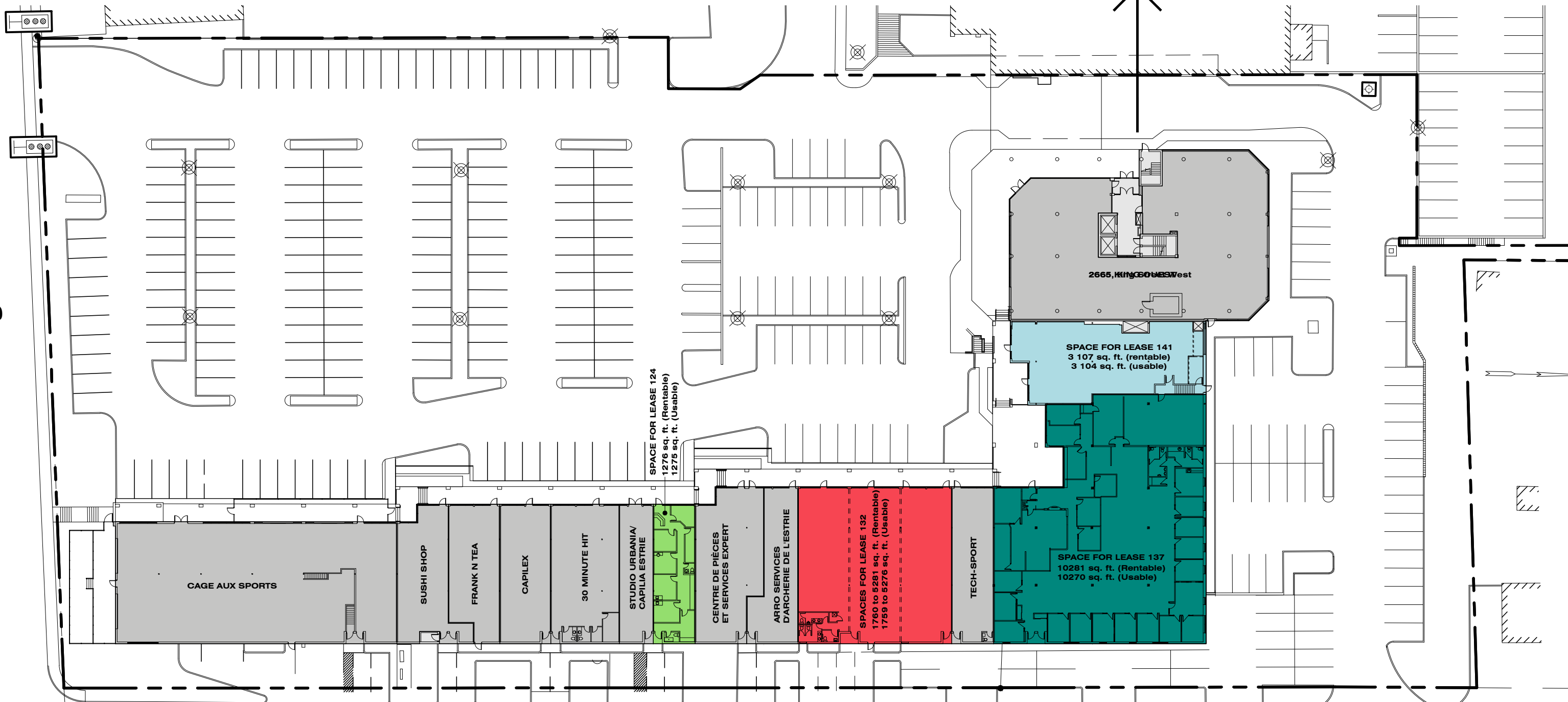
King Street West



LEVEL 3



LEVEL 6



Wilson Street

PLACE DES CONGRÈS - 2655-2665 King Street West

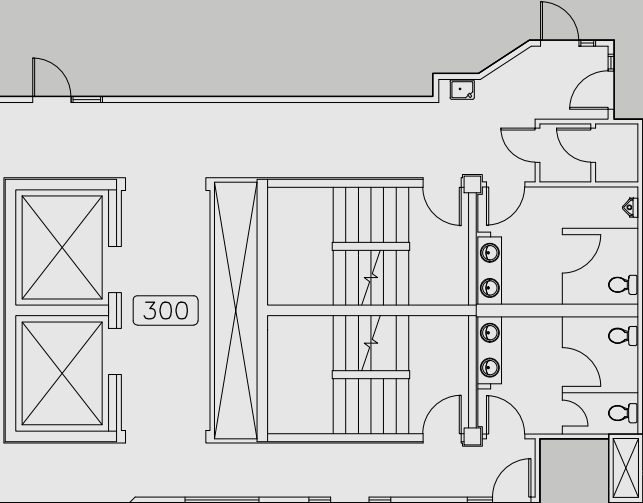
2665, King Street West



LEMIEUX BÉDARD

Parking

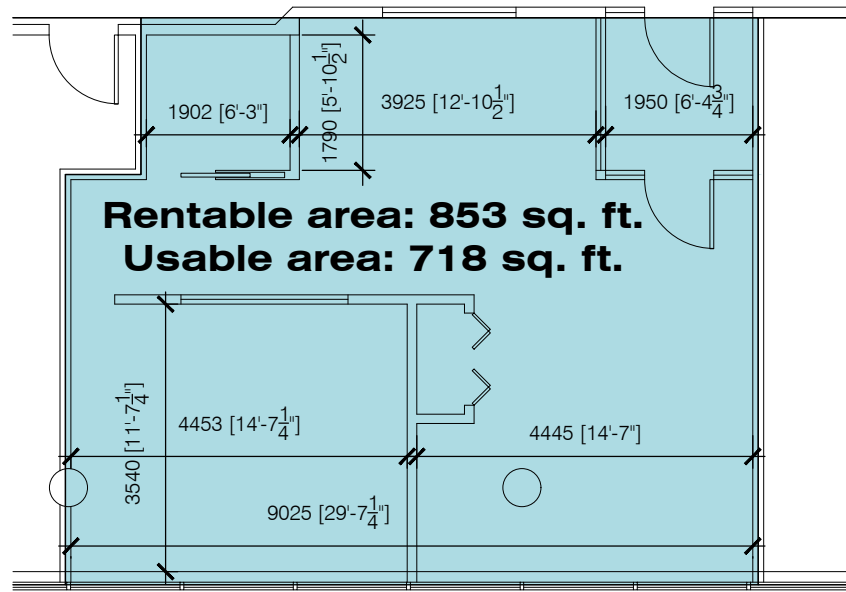
Parking



Rentable area:  
853 sq.ft.  
Usable area:  
718 sq.ft.  
SPACE FOR LEASE  
330



\* The interior design of the space for lease can be adjusted as needed.



LEVEL 3 - SPACE 330

SCALE: 1:100